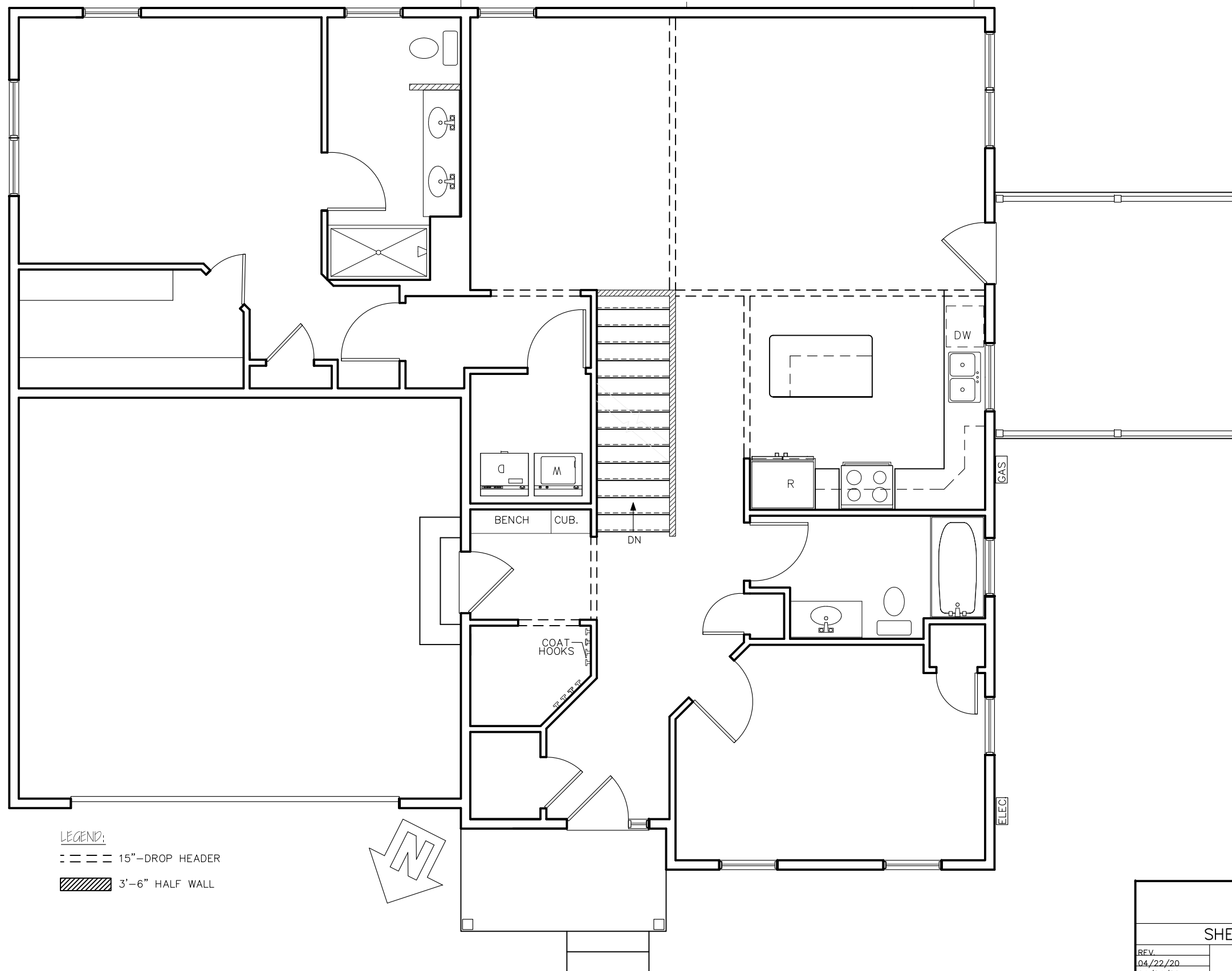




○ FRONT ELEVATION—IRISH HILL RD
 SCALE: 3/16" = 1'-0"

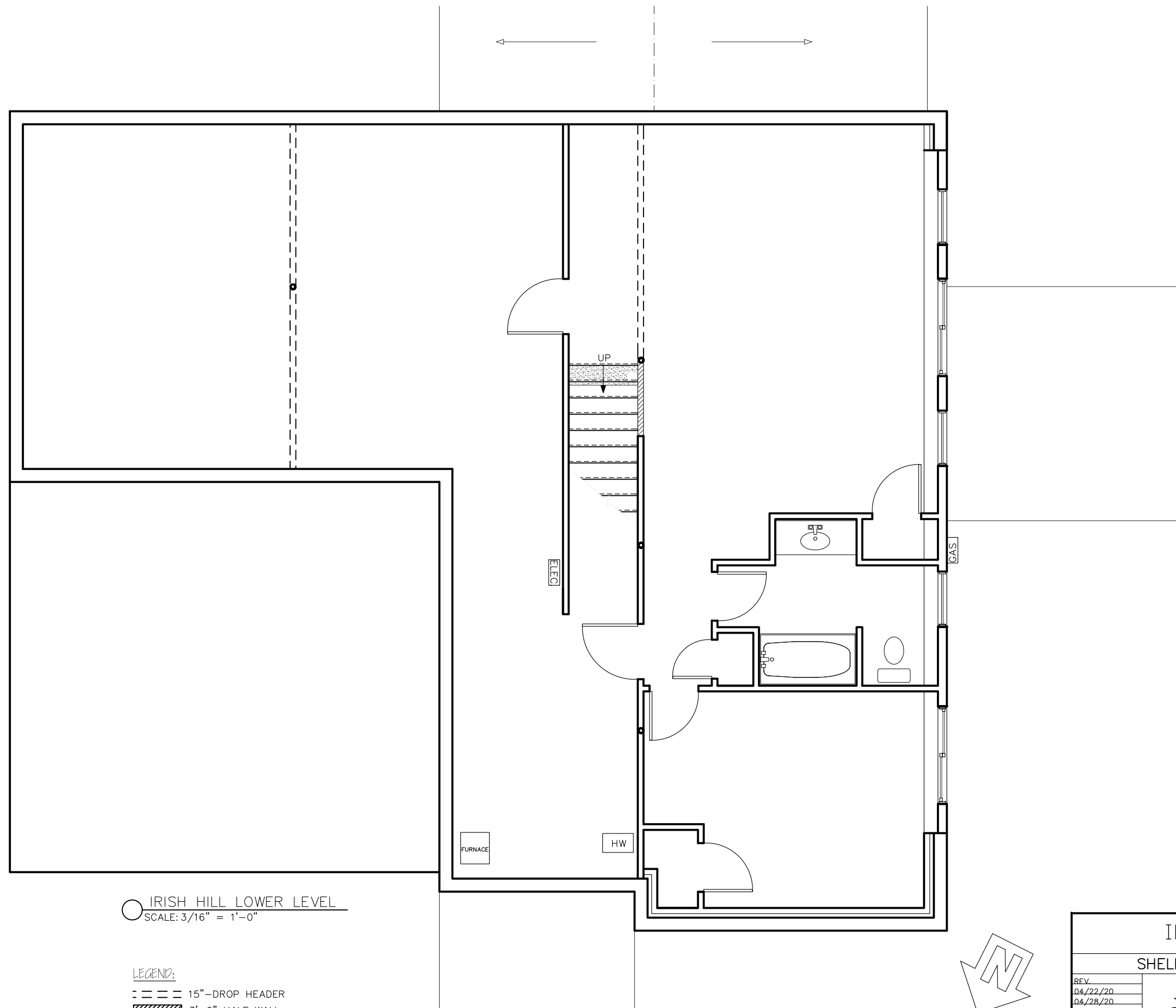
IRISH HILL	
IRISH HILL ROAD, SHELBURNE VT	
REV.	
<small>1037 HINESBURG ROAD / SUITE A / S. BURLINGTON, VT 05403</small>	
SCALE: 3/16" = 1'-0"	DATE: 07/08/19



LEGEND:
 --- 15" DROP HEADER
 ▨ 3'-6" HALF WALL

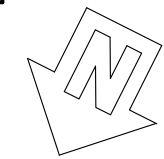
IRISH HILL FIRST FLOOR
 SCALE: 3/16" = 1'-0"

IRISH HILL	
SHELBURNE, VERMONT	
REV.	
04/22/20	
04/24/20	
04/26/20	
04/28/20	
 STERLING HOMES <small>1037 HINESBURG ROAD / SUITE A / S. BURLINGTON, VT 05403</small> <small>SCALE: 3/16" = 1'-0" DATE: 07/08/19</small>	
2	8



○ IRISH HILL LOWER LEVEL
 SCALE: 3/16" = 1'-0"

LEGEND:
 --- 15" DROP HEADER
 [Hatched Box] 3'-6" HALF WALL

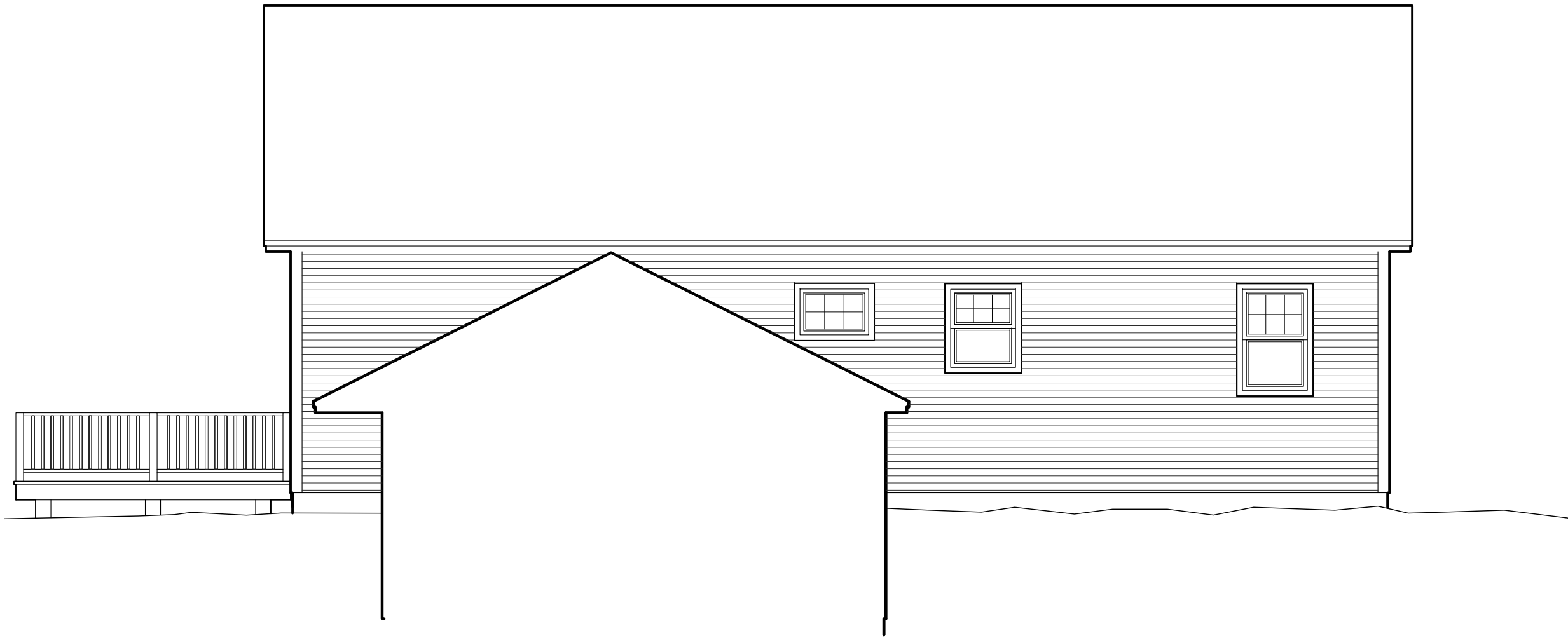


IRISH HILL	
SHELBURNE, VERMONT	
REV.	
04/22/20	
04/28/20	
 STERLING HOMES <small>1037 HINESBURG ROAD / SUITE A / S. BURLINGTON, VT 05403</small> <small>SCALE: 3/16" = 1'-0" DATE: 07/08/19</small>	
3	8



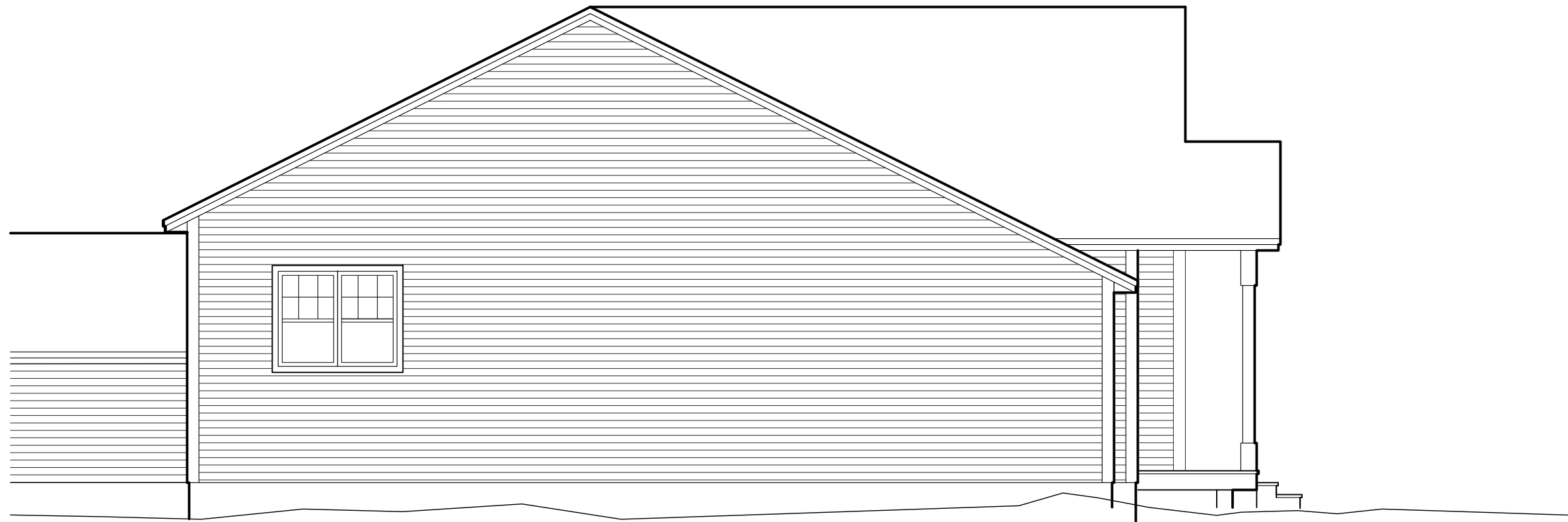
RIGHT ELEVATION-IRISH HILL RD.
SCALE: 3/16" = 1'-0"

IRISH HILL	
IRISH HILL ROAD, SHELBURNE VT	
REV.	
04/28/20	
<small>1037 HINESBURG ROAD / SUITE A / S. BURLINGTON, VT 05403</small> <small>SCALE: 3/16" = 1'-0" DATE: 07/08/19</small>	
6	8



○ REAR ELEVATION—IRISH HILL RD
SCALE: 3/16" = 1'-0"

IRISH HILL	
IRISH HILL ROAD, SHELBURNE VT	
REV.	
04/28/20	
1037 HINESBURG ROAD / SUITE A / S. BURLINGTON, VT 05403 SCALE: 3/16" = 1'-0" DATE: 07/08/19	



LEFT ELEVATION—IRISH HILL RD
 SCALE: 3/16" = 1'-0"

IRISH HILL	
IRISH HILL ROAD, SHELBURNE VT	
REV.	
04/28/20	
	
<small>1037 HINESBURG ROAD / SUITE A / S. BURLINGTON, VT 05403</small>	
<small>SCALE: 3/16" = 1'-0"</small>	<small>DATE: 07/08/19</small>