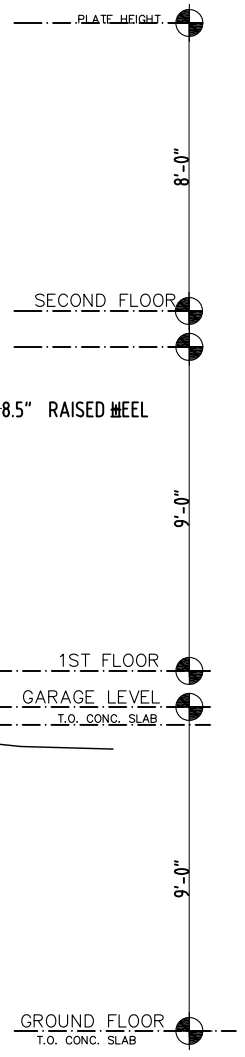

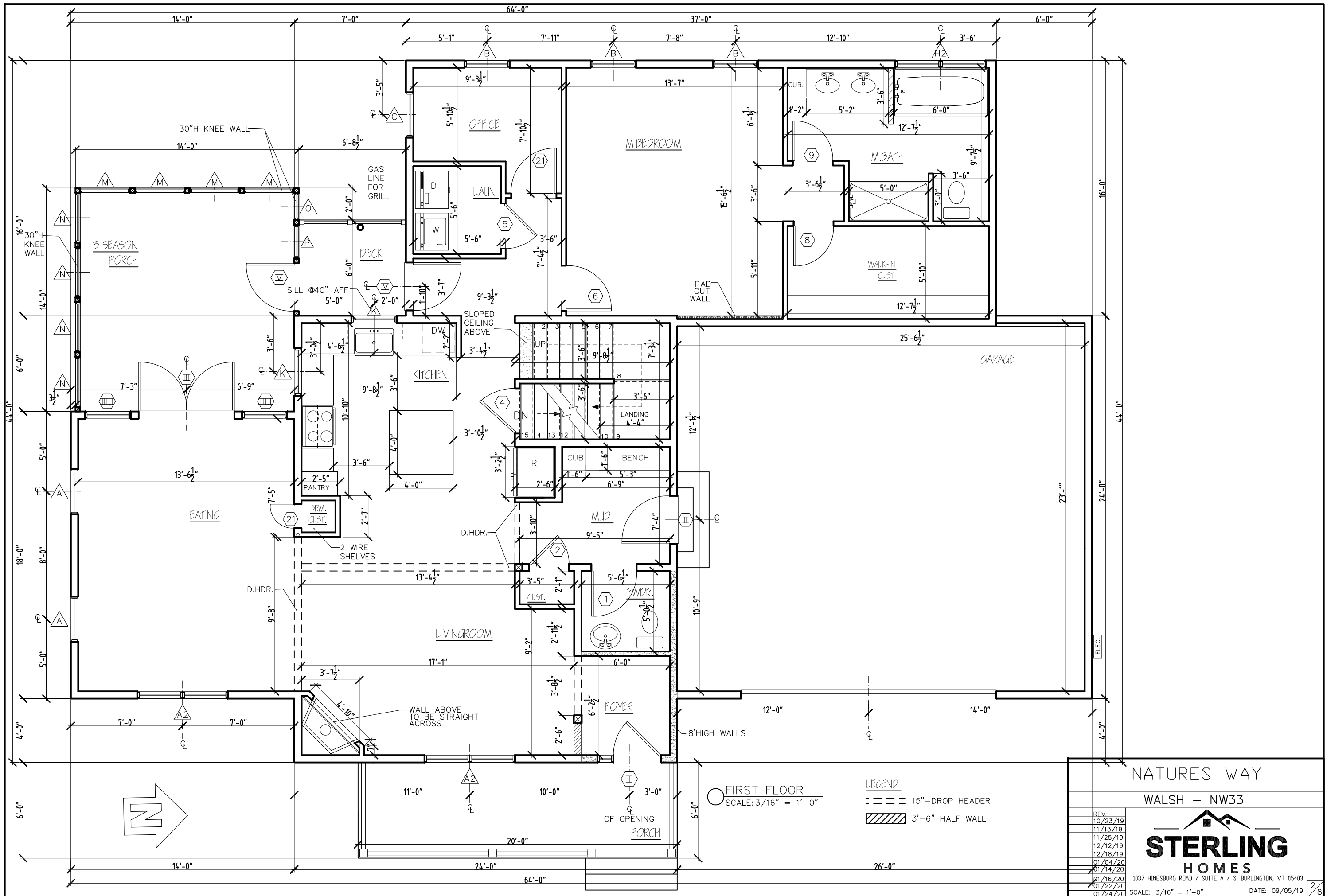


○ FRONT ELEVATION
SCALE: 3/16" = 1'-0"



NW33 Plans
3/16 = 1'-0"
1-24-20 V2

NATURES WAY	
WALSH - NW33	
REV.	
10/02/19	
10/11/19	
10/21/19	
10/23/19	
12/12/19	
 STERLING HOMES 1037 HINESBURG ROAD / SUITE A / S. BURLINGTON, VT 05403 SCALE: 3/16" = 1'-0" DATE: 09/05/19	
1/8	



FIRST FLOOR
SCALE: 3/16" = 1'-0"

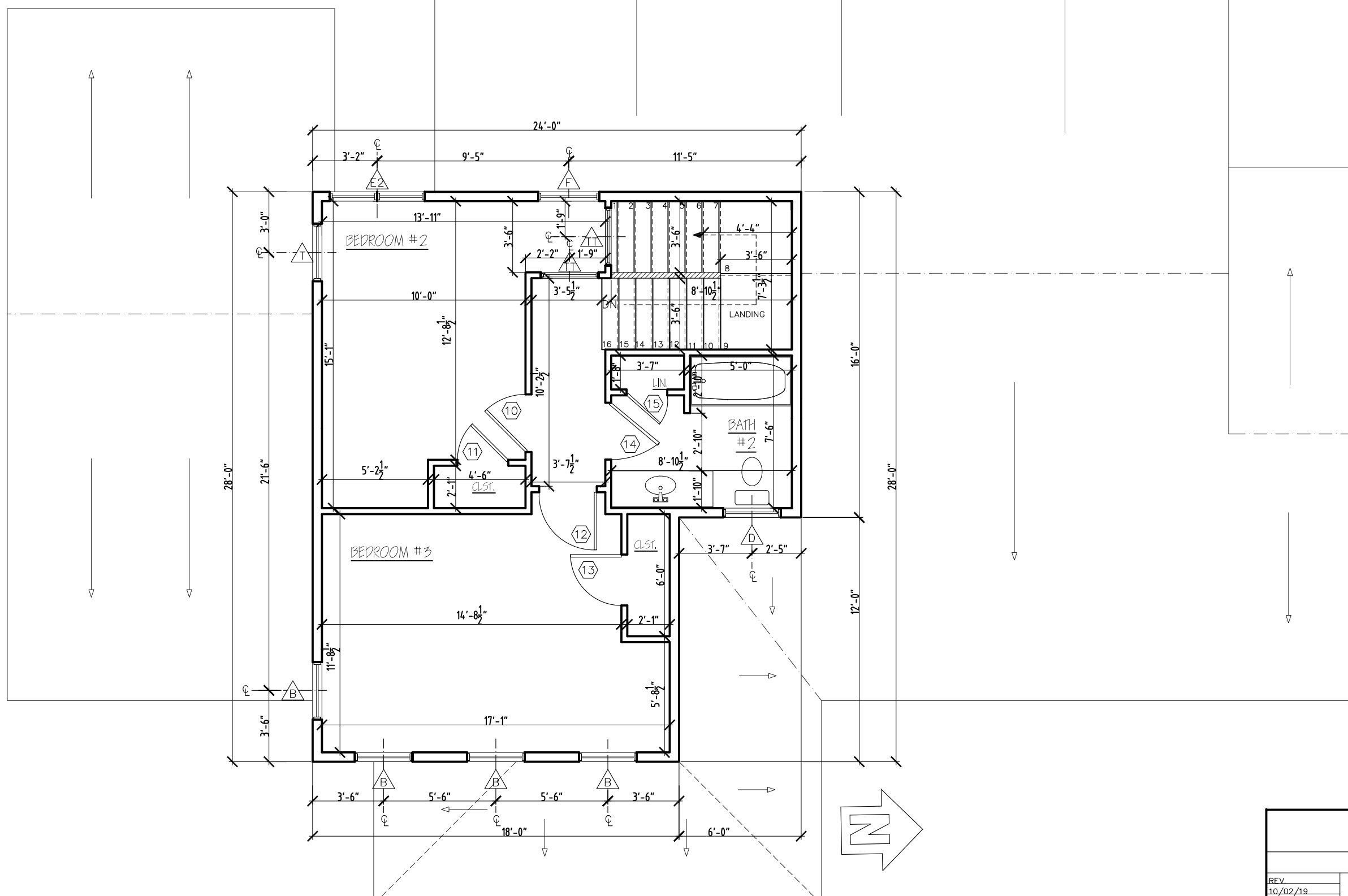
- LEGEND:
- 15"-DROP HEADER
 - ▨ 3'-6" HALF WALL

NATURES WAY
WALSH - NW33





REV.	DATE
10/23/19	
11/13/19	
11/25/19	
12/12/19	
12/18/19	
01/04/20	
01/14/20	
01/16/20	
01/22/20	
01/24/20	

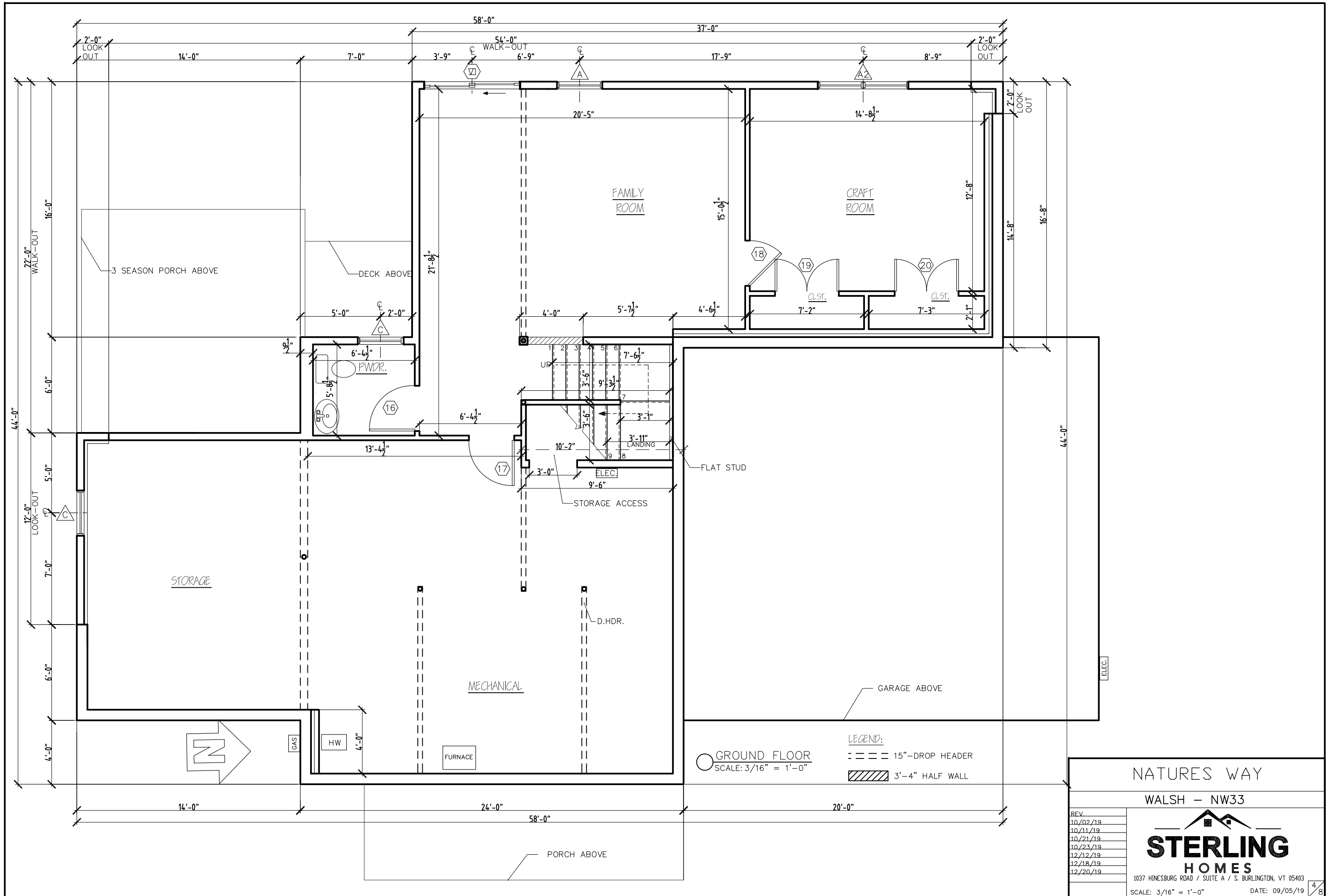
1037 HINESBURG ROAD / SUITE A / S. BURLINGTON, VT 05403
SCALE: 3/16" = 1'-0" DATE: 09/05/19




○ SECOND FLOOR
SCALE: 3/16" = 1'-0"

LEGEND:
 3'-4" HALF WALL

NATURES WAY	
WALSH - NW33	
REV.	
10/02/19	
10/11/19	
10/21/19	
11/13/19	
01/14/20	
 STERLING HOMES 1037 HINESBURG ROAD / SUITE A / S. BURLINGTON, VT 05403 SCALE: 3/16" = 1'-0" DATE: 09/05/19	
3/8	



NATURES WAY
WALSH - NW33



STERLING HOMES


1037 HINESBURG ROAD / SUITE A / S. BURLINGTON, VT 05403

SCALE: 3/16" = 1'-0" DATE: 09/05/19

REV.	DATE



○ LEFT ELEVATION
SCALE: 3/16" = 1'-0"

NATURES WAY	
WALSH - NW33	
REV	
10/21/19	
10/23/19	
12/12/19	
 STERLING HOMES <small>1037 HINESBURG ROAD / SUITE A / S. BURLINGTON, VT 05403</small> SCALE: 3/16" = 1'-0" DATE: 09/05/19	
6/8	



○ REAR ELEVATION
SCALE: 3/16" = 1'-0"

NATURES WAY
WALSH - NW33

REV.	
10/11/19	
10/21/19	
10/23/19	
11/13/19	
12/12/19	
01/14/20	
01/16/20	

STERLING HOMES
1037 HINESBURG ROAD / SUITE A / S. BURLINGTON, VT 05403
SCALE: 3/16" = 1'-0" DATE: 09/05/19

8/8

12
5

8:12

12
5

12
4

12
4

12
4

7.5" RAISED HEEL

10" FRIEZE BOARD

7.5" RAISED HEEL

8.5" RAISED HEEL

PLATE HEIGHT

8'-0"

SECOND FLOOR

9'-0"

1ST FLOOR

GARAGE LEVEL
T.O. CONC. SLAB

9'-0"

T.O. CONC. SLAB
GROUND FLOOR

±6

8'-2 1/2"

9'-4"

±1'-10"

RIGHT ELEVATION
SCALE: 3/16" = 1'-0"

NATURES WAY

WALSH - NW33

REV
10/11/19
10/21/19
10/23/19

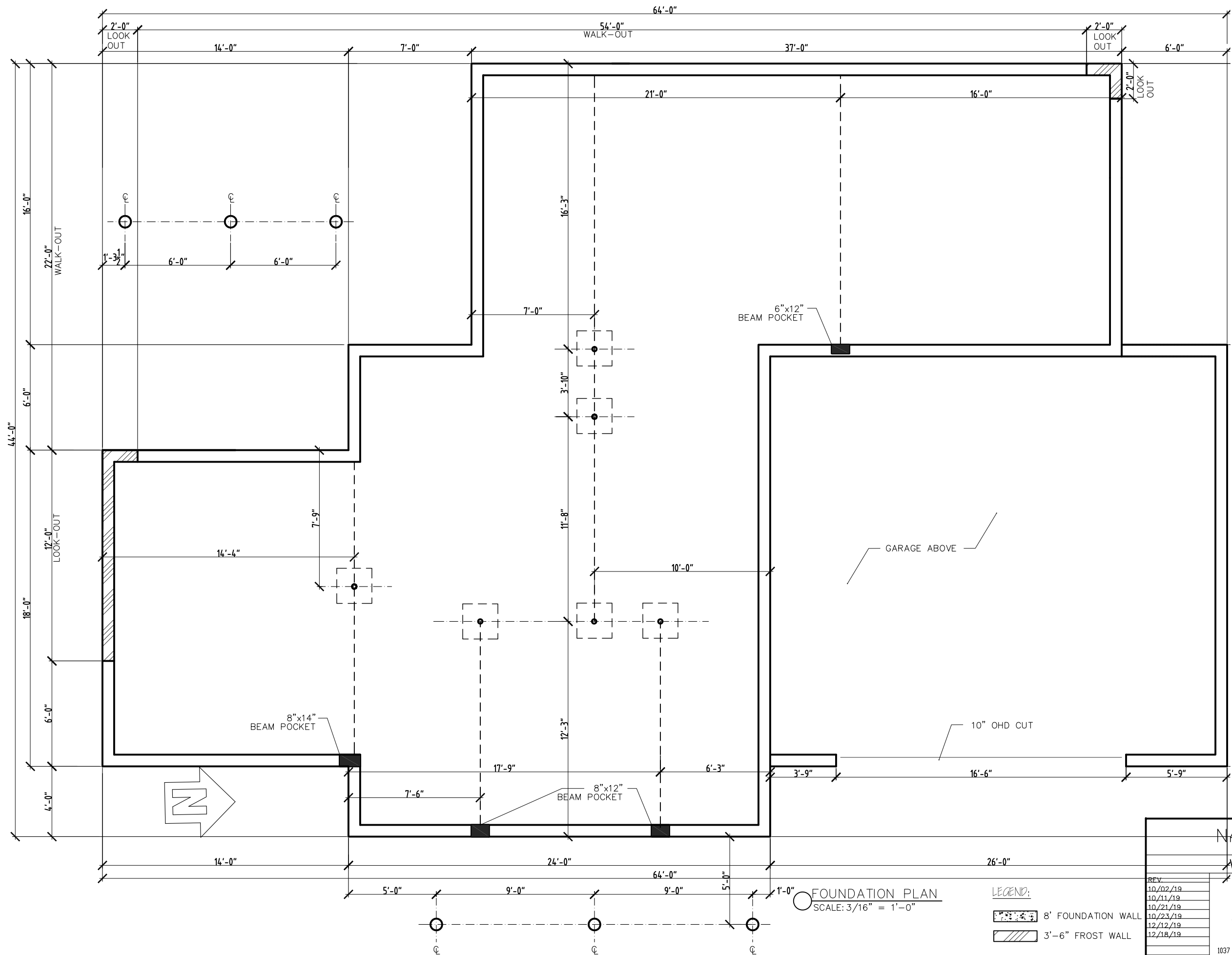


1037 HINESBURG ROAD / SUITE A / S. BURLINGTON, VT 05403

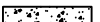
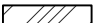
SCALE: 3/16" = 1'-0"

DATE: 09/05/19

7/8



FOUNDATION PLAN
SCALE: 3/16" = 1'-0"

- LEGEND:
-  8' FOUNDATION WALL
 -  3'-6" FROST WALL

REV	DATE
10/02/19	
10/11/19	
10/21/19	
10/23/19	
12/12/19	
12/18/19	

NATURES WAY
WALSH - NW33



1037 HINESBURG ROAD / SUITE A / S. BURLINGTON, VT 05403
SCALE: 3/16" = 1'-0" DATE: 09/05/19