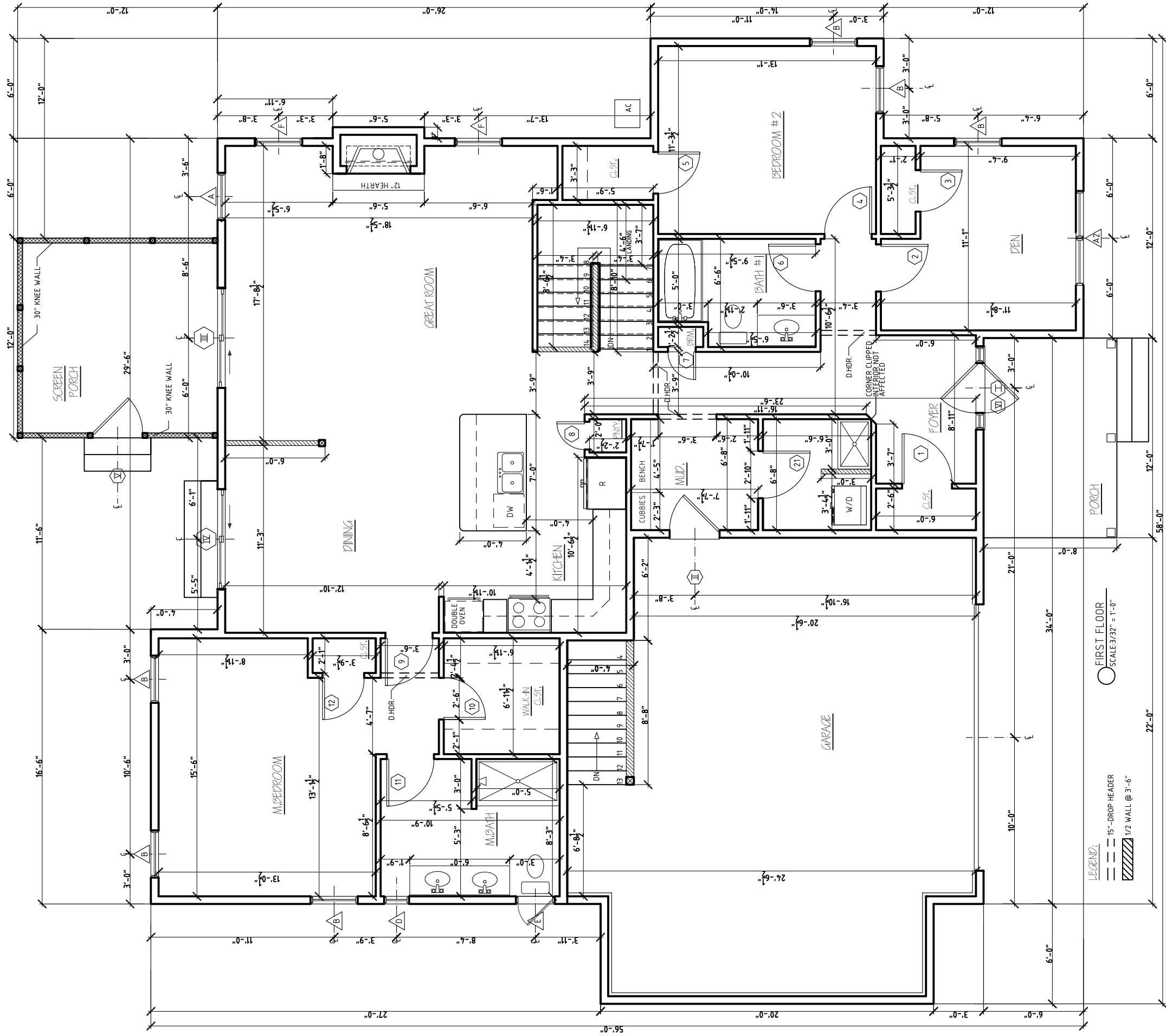


FRONT ELEVATION
SCALE: 3/16" = 1'-0"

NATURES WAY	
NW25 - DELPHIA ASPEN	
REV. 04/07/20	
	1037 HINESBURG ROAD / SUITE A / S. BURLINGTON, VT 05403
	SCALE: 3/16" = 1'-0" DATE: 02/15/20
	1/8



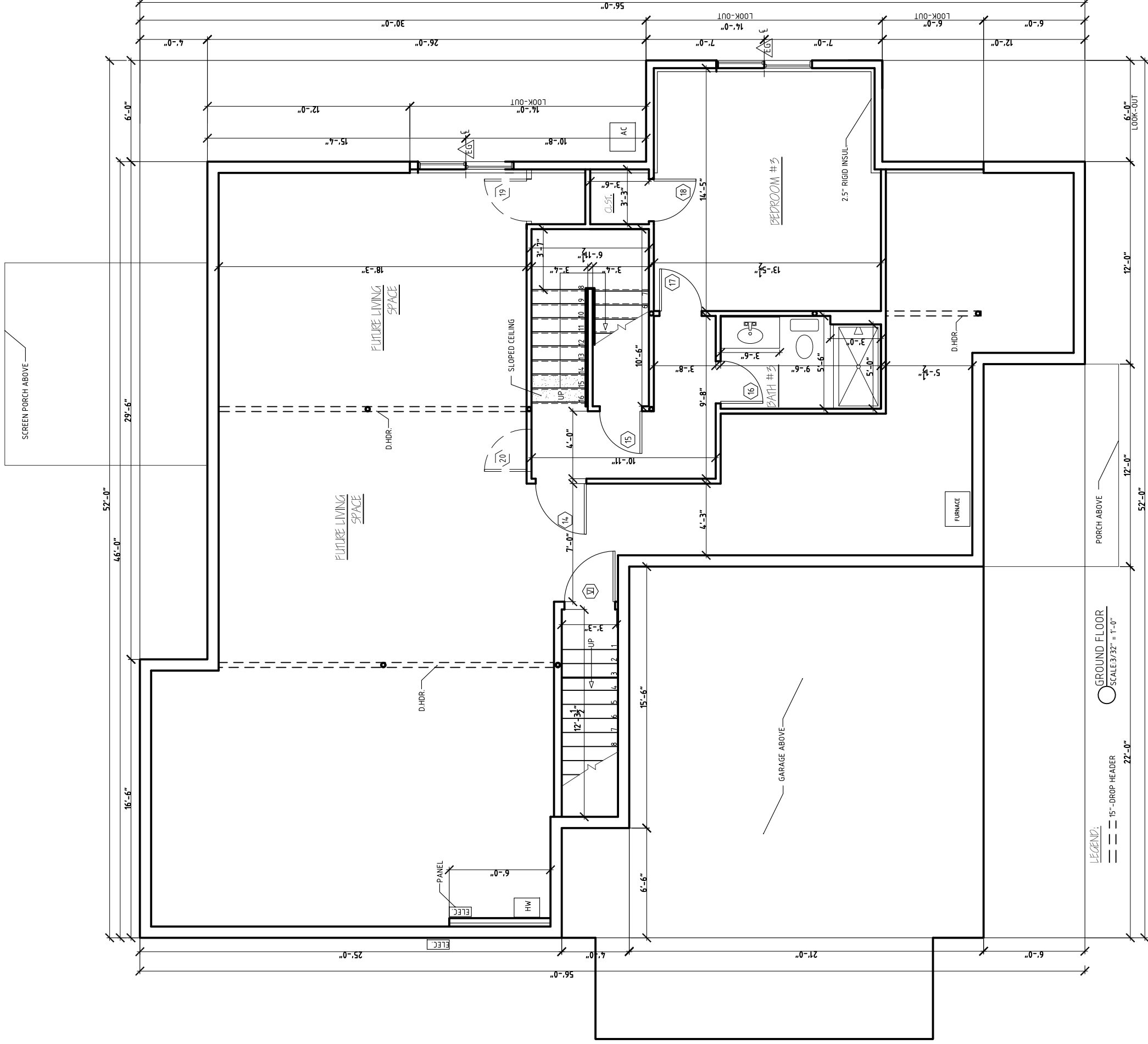
LEGEND:
 ○ FIRST FLOOR
 ○ SCALE 3/32" = 1'-0"
 --- 15" DROP HEADER
 ▨ 1/2 WALL @ 3'-6"

NATURES WAY
 NW25 - DELPHIA ASPEN

REV.	DATE
02/28/20	
04/07/20	
04/13/20	
04/16/20	
04/18/20	
04/24/20	

STERLING HOMES

1037 HINESBURG ROAD / SUITE A / S. BURLINGTON, VT 05403
 SCALE: 3/16" = 1'-0" DATE: 02/15/20



NATURES WAY

NW25 - DELPHIA ASPEN

REV. 04/29/20

STERLING HOMES

1037 HINESBURG ROAD / SUITE A / S. BURLINGTON, VT 05403

SCALE: 3/16" = 1'-0"

DATE: 02/15/20

1/8



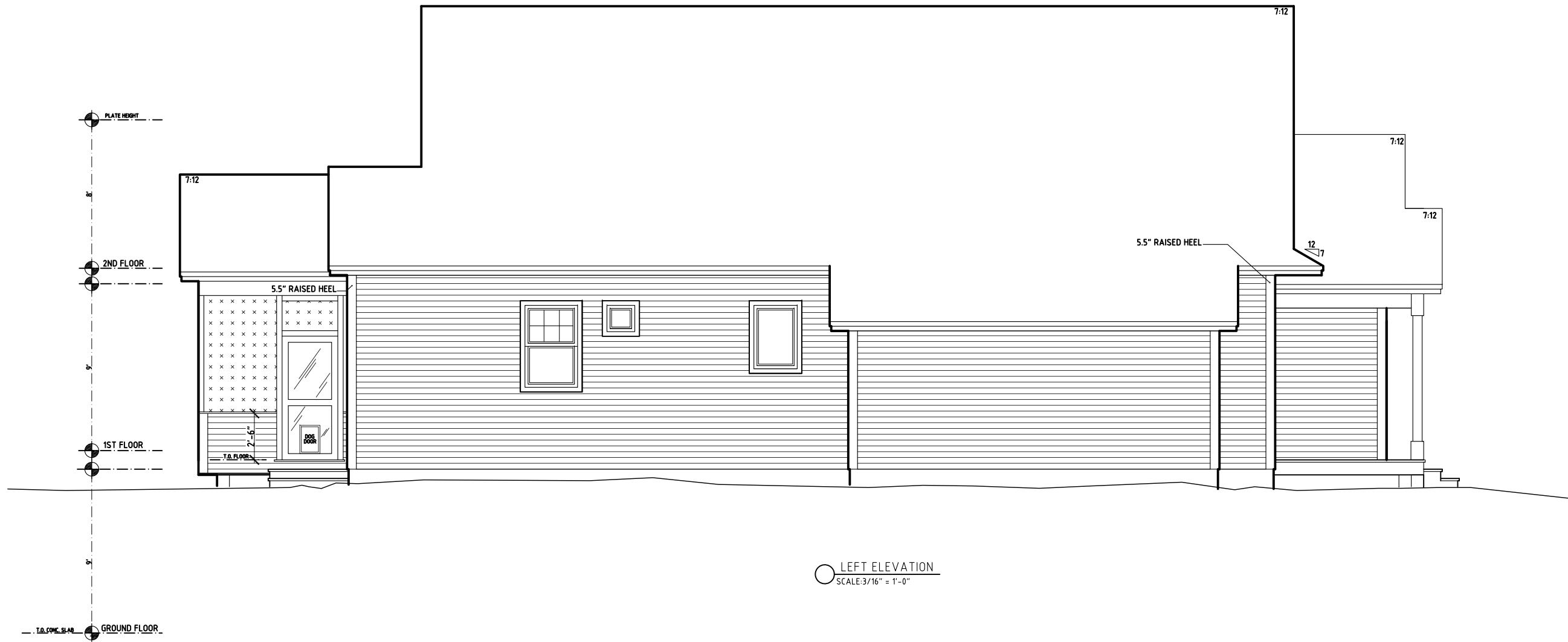
RIGHT ELEVATION
SCALE: 3/16" = 1'-0"

NATURES WAY	
NW25 - DELPHIA ASPEN	
REV.	
02/28/20	
04/07/20	
 STERLING HOMES	
1037 HINESBURG ROAD / SUITE A / S. BURLINGTON, VT 05403	
SCALE: 3/16" = 1'-0"	DATE: 02/15/20
	1/8



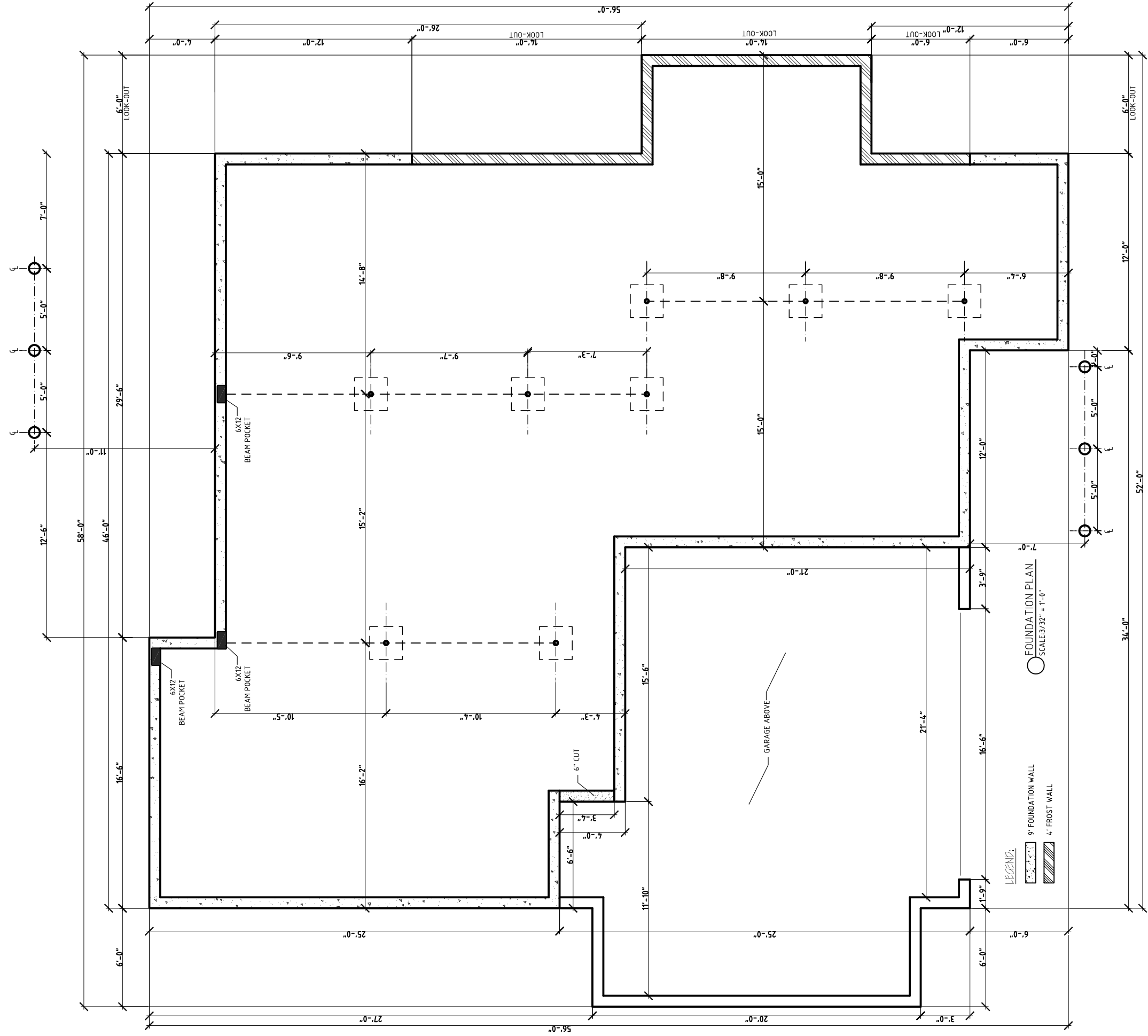
REAR ELEVATION
SCALE: 3/16" = 1'-0"

NATURES WAY	
NW25 - DELPHIA ASPEN	
REV. 04/07/20	
	1037 HINESBURG ROAD / SUITE A / S. BURLINGTON, VT 05403
	SCALE: 3/16" = 1'-0" DATE: 02/15/20
	1/8



LEFT ELEVATION
SCALE: 3/16" = 1'-0"

NATURES WAY	
NW25 - DELPHIA ASPEN	
REV.	
04/07/20	
 STERLING HOMES	
<small>1037 HINESBURG ROAD / SUITE A / S. BURLINGTON, VT 05403 SCALE: 3/16" = 1'-0" DATE: 02/15/20</small>	
1	8



NATURES WAY

NW25 - DELPHIA ASPEN

REV. 04/29/20

STERLING HOMES

1037 HINESBURG ROAD / SUITE A / S. BURLINGTON, VT 05403

SCALE: 3/16" = 1'-0"

DATE: 02/15/20

1/8