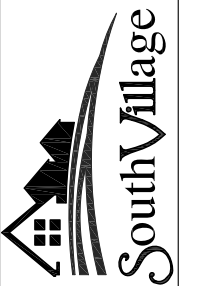


○ FRONT ELEVATION
SCALE: 3/16" = 1'-0"

SV41N
3/16" = 1'-0"
4-26-17



LEVY - SV41N
ELEVATIONS

Phone: 802-861-7600

Burlington, Vermont

WWW.SOUTHVILLAGE.COM

Disclaimer: The floor plan shown is representative and not drawn to scale. Square footage calculations are approximate and do not include garages and porches. These plans are subject to revision without notice.

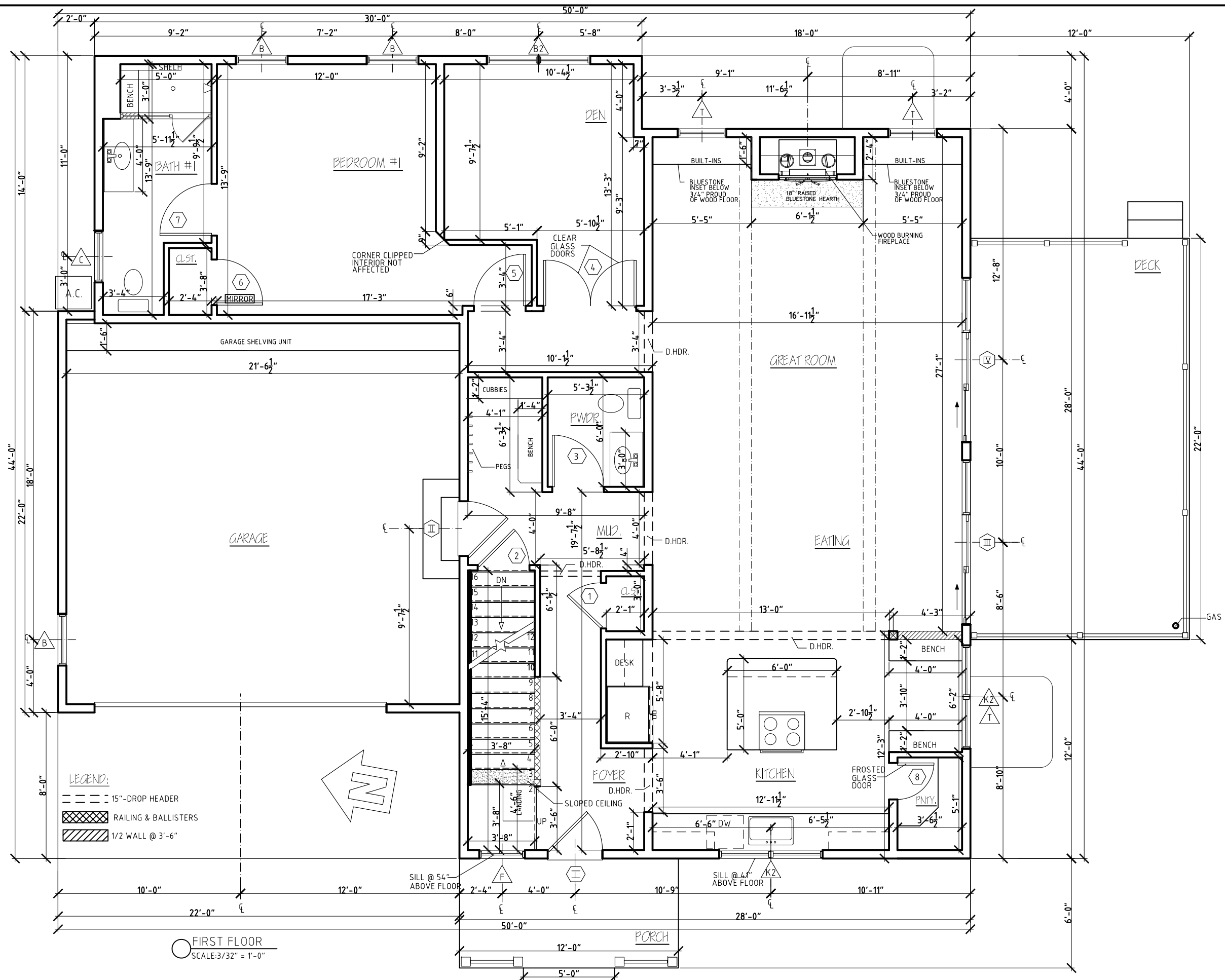
REV.	DATE
01/21/17	
02/15/17	
02/27/17	
03/09/17	

STERLING HOMES

1037 HINESBURG ROAD / SUITE A / S. BURLINGTON, VT 05403
SCALE: 3/16" = 1'-0"

DATE: 12/31/16

1/8



LEGEND:
 - - - 15\"-DROPPED HEADER
 [Cross-hatched box] RAILING & BALLISTERS
 [Hatched box] 1/2 WALL @ 3\"-6\"

FIRST FLOOR
 SCALE: 3/32\" = 1\"-0\"



LEVY - SV41N
 FLOORPLANS

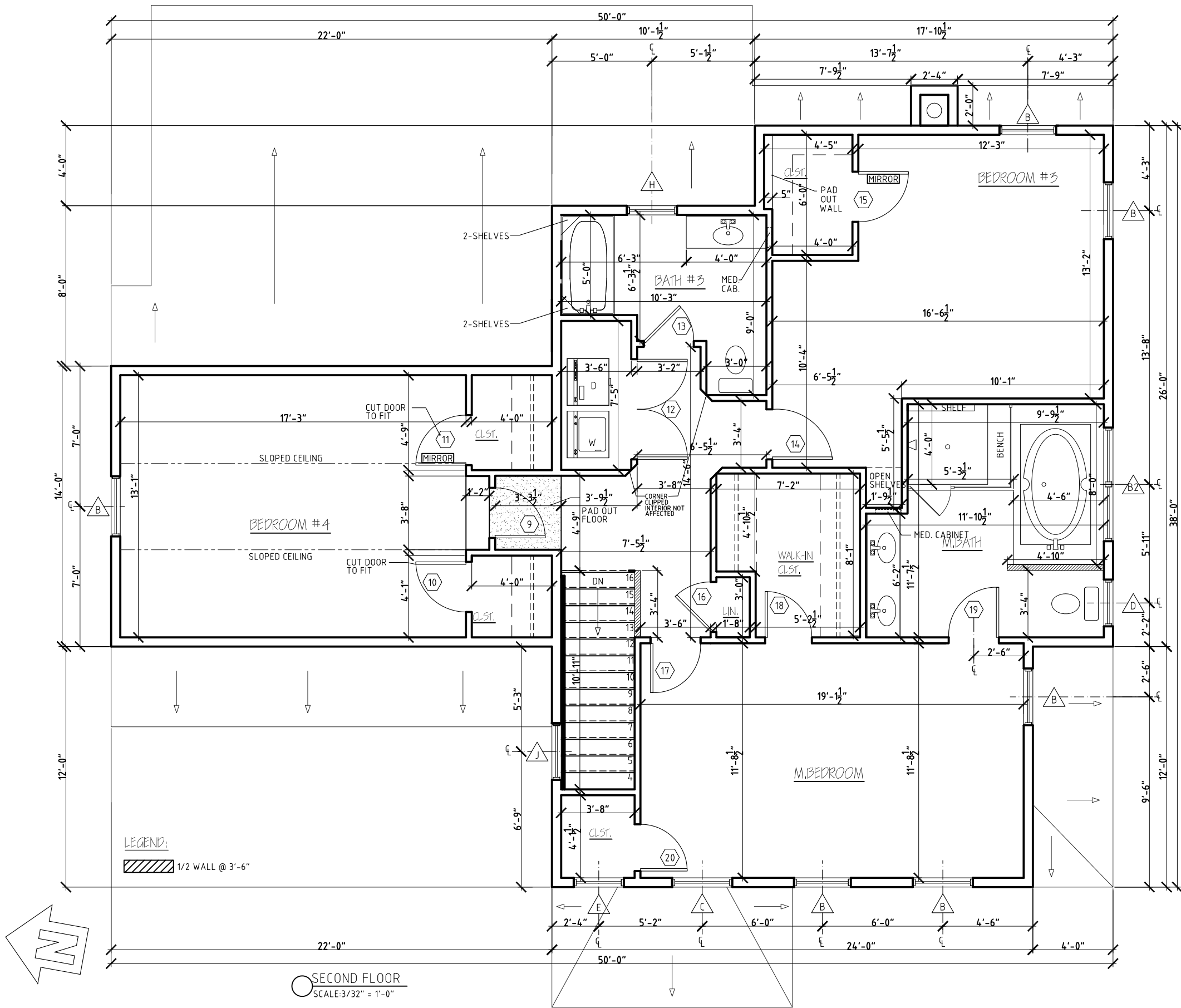
Phone: 802-861-7600
 Burlington, Vermont


WWW.SOUTHVILLAGE.COM

Disclaimer: The floor plan shown is representative and not drawn to scale. Square footage calculations are approximate and do not include garages and porches. These plans are subject to revision without notice.

STERLING HOMES

1037 HINESBURG ROAD / SUITE A / S. BURLINGTON, VT 05403
 SCALE: 3/16\" = 1\"-0\"
 DATE: 12/31/16



LEGEND:
 1/2 WALL @ 3'-6"

SECOND FLOOR
 SCALE: 3/32" = 1'-0"



LEVY - SV41N
 FLOORPLANS

Phone: 802-861-7600

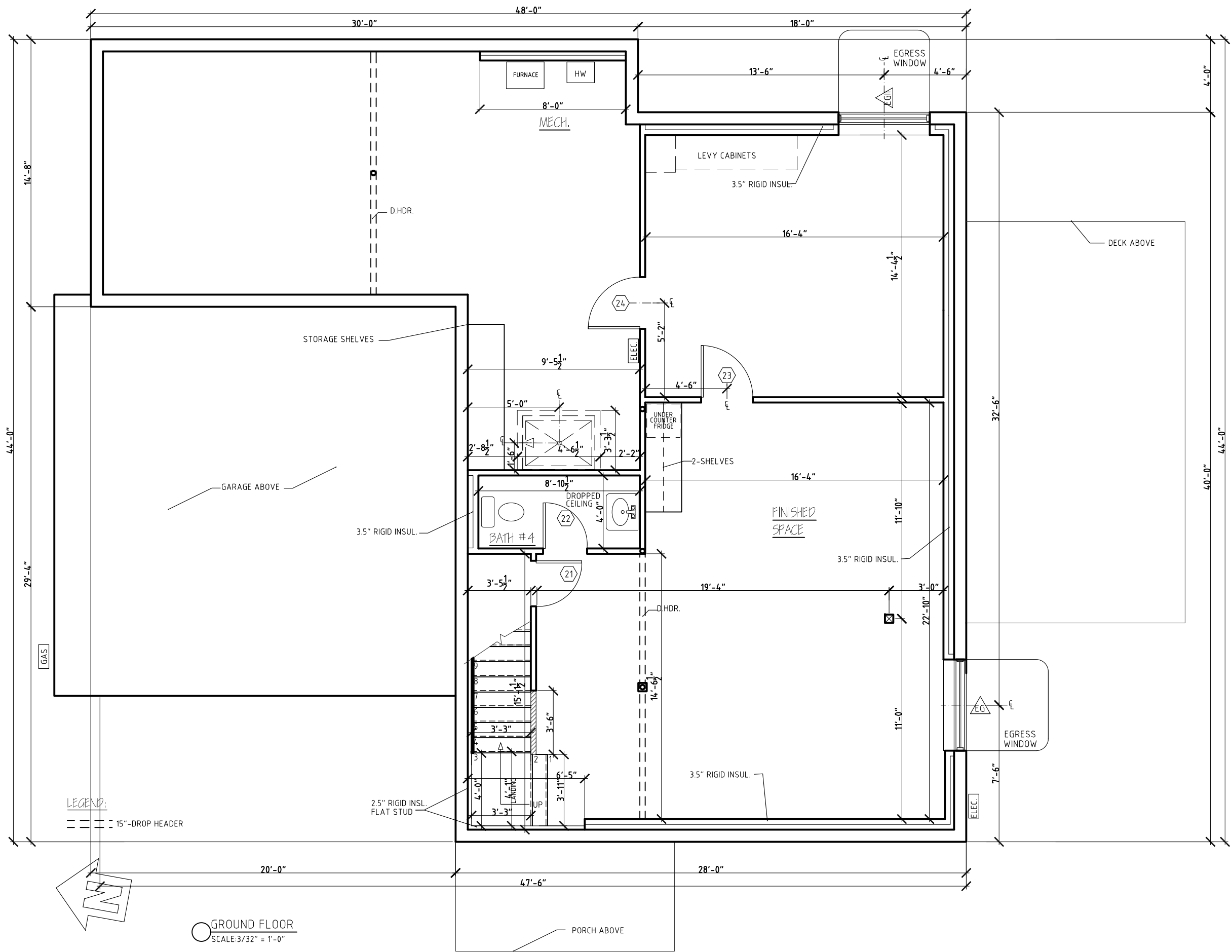
Burlington, Vermont

WWW.SOUTHVILLAGE.COM

Disclaimer: The floor plan shown is representative and not drawn to scale. Square footage calculations are approximate and do not include garages and porches. These plans are subject to revision without notice.

REV.	DATE
01/25/17	
02/02/17	
02/15/17	
02/21/17	
03/09/17	
03/14/17	
03/15/17	
03/16/17	
03/22/17	

STERLING HOMES
 1037 HINESBURG ROAD / SUITE A / S. BURLINGTON, VT 05403
 SCALE: 3/16" = 1'-0"
 DATE: 12/31/16



LEGEND:
 --- 15"-DROP HEADER

GROUND FLOOR
 SCALE: 3/32" = 1'-0"



LEVY - SV41N
 FLOORPLANS

Phone: 802-861-7600

Burlington, Vermont

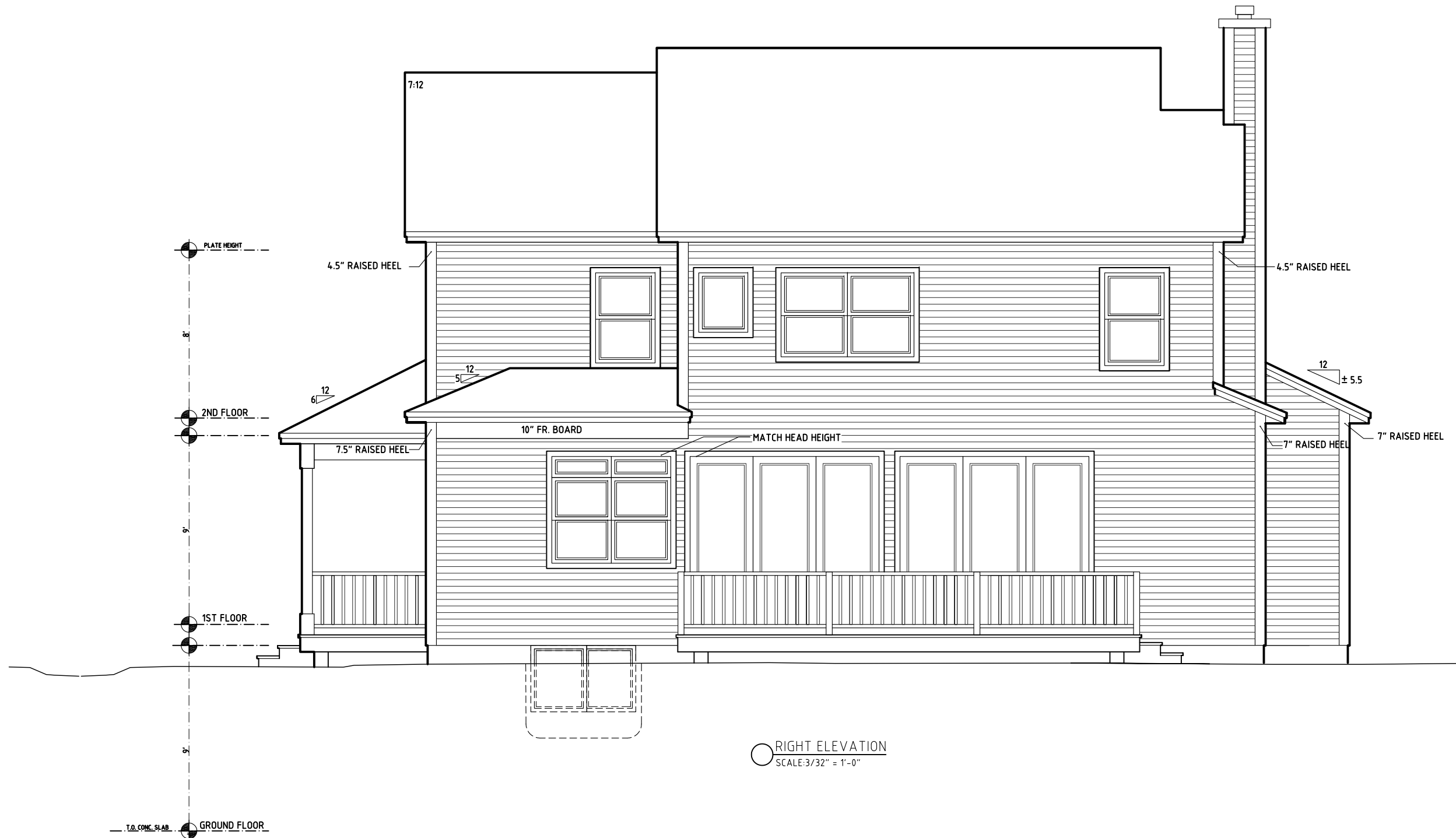
WWW.SOUTHVILLAGE.COM

Disclaimer: The floor plan shown is representative and not drawn to scale. Square footage calculations are approximate and do not include garages and porches. These plans are subject to revision without notice.



1087 HINESBURG ROAD / SUITE A / S. BURLINGTON, VT 05403
 SCALE: 3/16" = 1'-0"
 DATE: 12/31/16

REV.	DATE
01/27/17	
02/15/17	
02/27/17	
03/09/17	
03/14/17	
03/15/17	
03/20/17	
03/31/17	
04/03/17	



RIGHT ELEVATION
SCALE: 3/32" = 1'-0"



LEVY - SV41N
ELEVATIONS

Phone: 802-861-7600
Burlington, Vermont

WWW.SOUTHVILLAGE.COM

Disclaimer: The floor plan shown is representative and not drawn to scale. Square footage calculations are approximate and do not include garages and porches. These plans are subject to revision without notice.

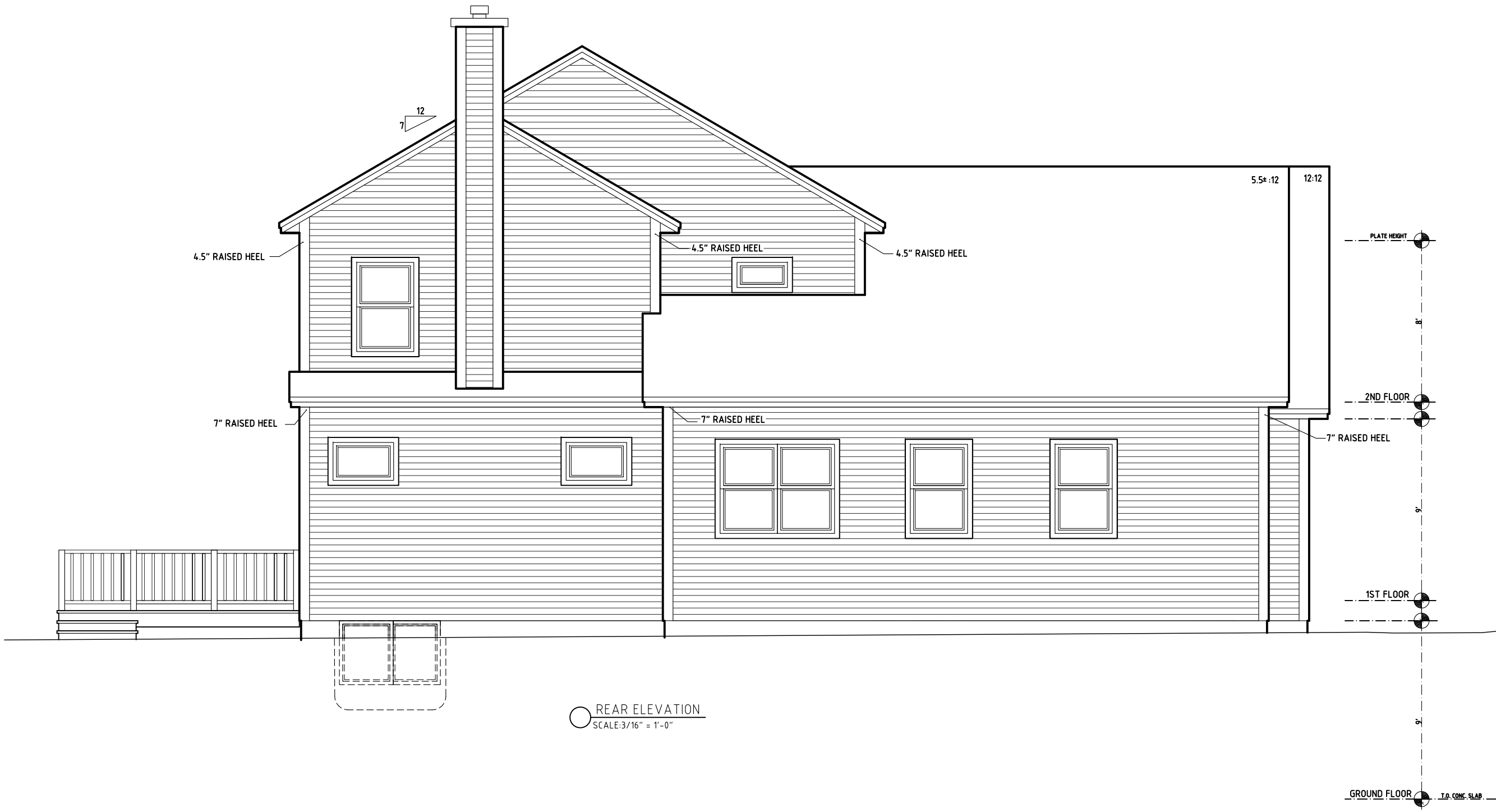
REV.	DATE
01	01/21/17
01	02/25/17
02	02/15/17
02	02/21/17
03	03/09/17
03	03/14/17
03	03/31/17

STERLING HOMES

1037 HINESBURG ROAD / SUITE A / S. BURLINGTON, VT 05403
SCALE: 3/16" = 1'-0"

DATE: 12/31/16

7/8



○ REAR ELEVATION
SCALE: 3/16" = 1'-0"



LEVY - SV41N
ELEVATIONS

Phone: 802-861-7600
Burlington, Vermont

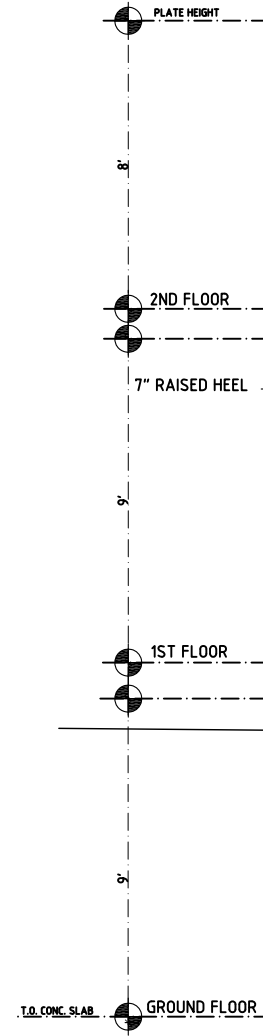
WWW.SOUTHVILLAGE.COM

Disclaimer: The floor plan shown is representative and not drawn to scale. Square footage calculations are approximate and do not include garages and porches. These plans are subject to revision without notice.

REV.	DATE
01/21/17	
01/25/17	
02/15/17	
02/21/17	
03/09/17	
03/15/17	

STERLING HOMES

1037 HINESBURG ROAD / SUITE A / S. BURLINGTON, VT 05403
SCALE: 3/16" = 1'-0" DATE: 12/31/16



○ LEFT ELEVATION
SCALE: 3/32" = 1'-0"



LEVY - SV41N
ELEVATIONS

Phone: 802-861-7600
Burlington, Vermont

WWW.SOUTHVILLAGE.COM

Disclaimer: The floor plan shown is representative and not drawn to scale. Square footage calculations are approximate and do not include garages and porches. These plans are subject to revision without notice.

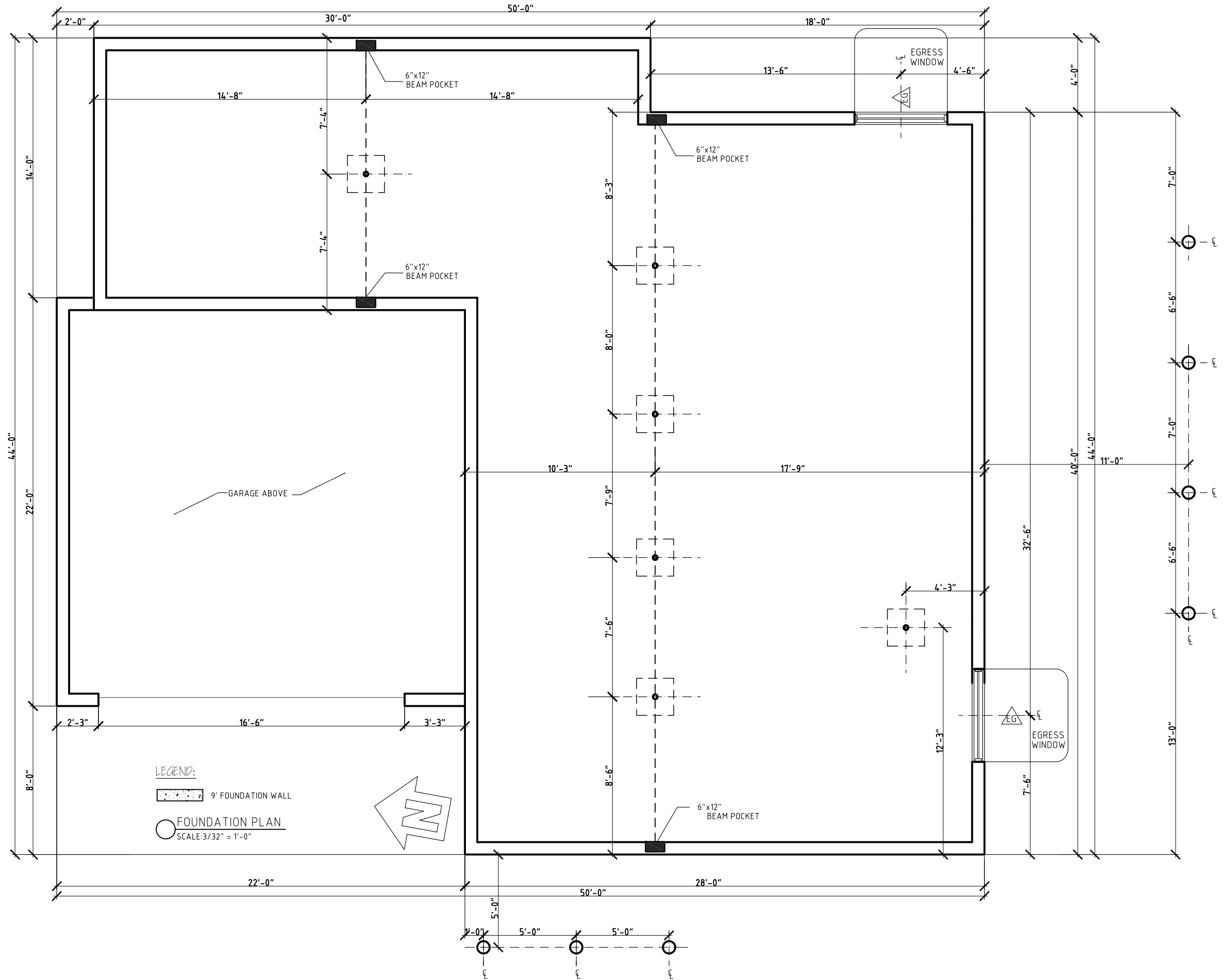
REV.	DATE
01/21/17	
01/25/17	
01/27/17	
02/15/17	
03/09/17	
03/23/17	

STERLING HOMES

1037 HINESBURG ROAD / SUITE A / S. BURLINGTON, VT 05403
SCALE: 3/16" = 1'-0"

DATE: 12/31/16

6/8



LEVY - SV41N
FLOORPLANS

Phone: 802-861-7600

Burlington, Vermont

WWW.SOUTHVILLAGE.COM

Disclaimer: The floor plan shown is representative and not drawn to scale. Square footage calculations are approximate and do not include garages and porches. These plans are subject to revision without notice.

REV.	DATE
01/25/17	
02/15/17	
03/09/17	
03/14/17	

STERLING HOMES

1037 HINESBURG ROAD / SUITE A / S. BURLINGTON, VT 05403
SCALE: 3/16" = 1'-0"