

LEFT UNIT SV #39
FLOOR PLANS

Phone: 802-861-7600 Burlington, Vermont

Disclaimer: The floor plan shown is representative and not drawn to scale. Square footage calculations are approximate and do not include garages and porches. These plans are subject to revision without notice.

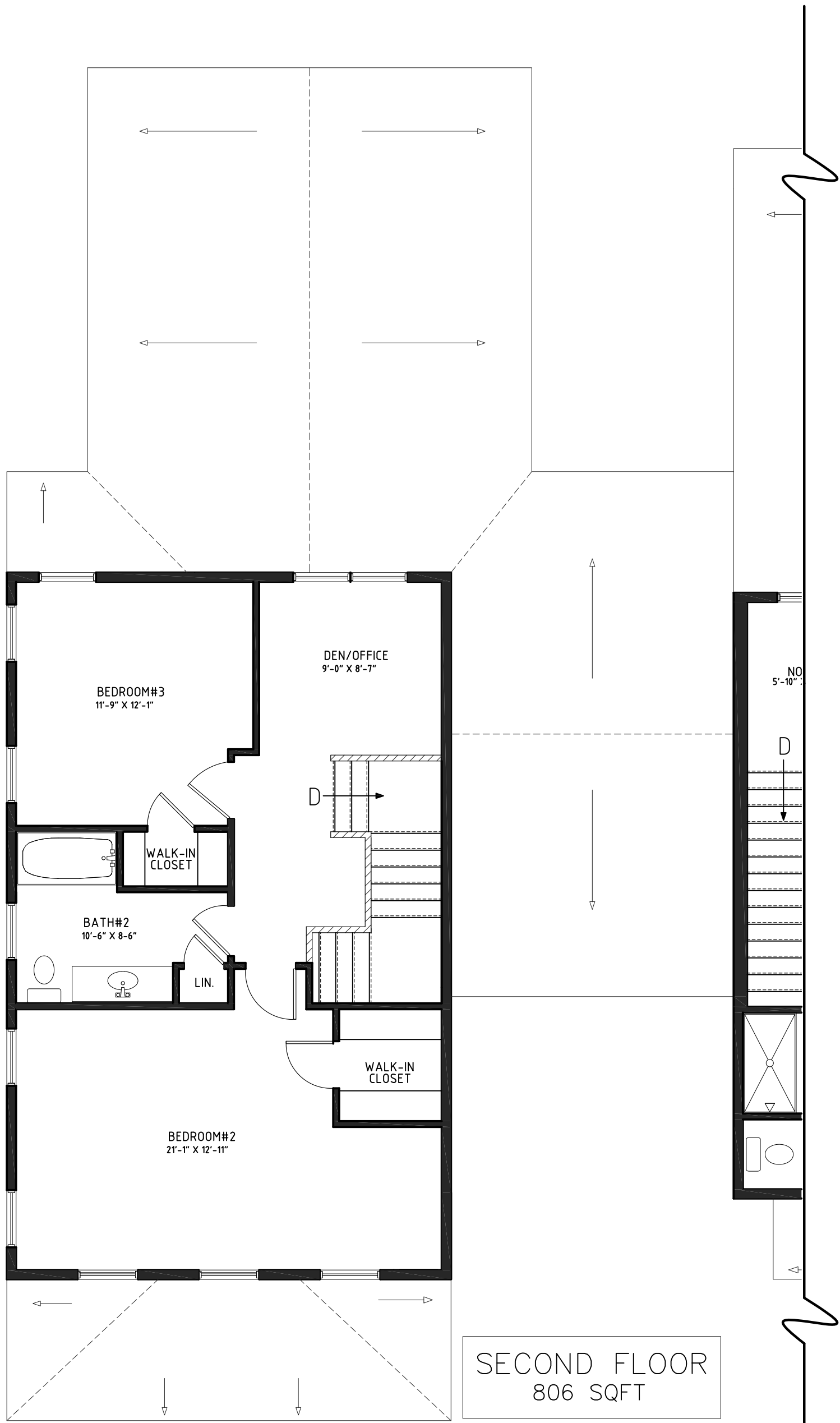
WWW.SOUTHVILLAGE.COM

REV.	09/28/15
	10/26/15
	11/03/15
	04/12/16

STERLING HOMES

1037 HINESBURG ROAD - SUITE A- SD. BURLINGTON VT 05403

SCALE: 3/16" = 1'-0" DATE: 09/18/15



TOTAL=2,130 SQ.FT



LEFT UNIT SV #39
FLOOR PLANS

Phone: 802-861-7600 Burlington, Vermont

Disclaimer: The floor plan shown is representative and not drawn to scale. Square footage calculations are approximate and do not include garages and porches. These plans are subject to revision without notice.

WWW.SOUTHVILLAGE.COM

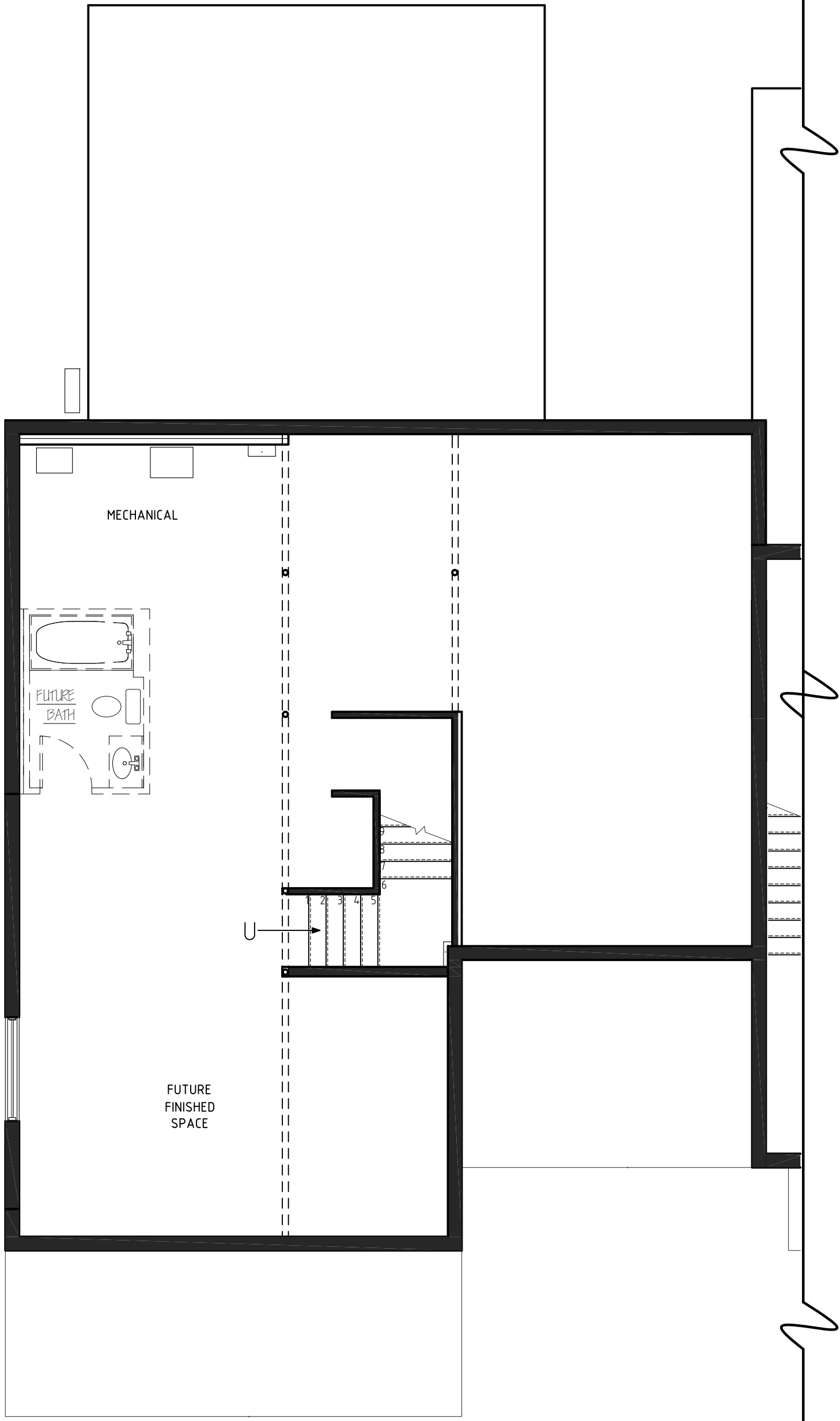
REV.	DATE
09/28/15	
11/03/15	
04/12/16	

STERLING HOMES

1037 HINESBURG ROAD - SUITE A- SQ. BURLINGTON VT 05403

SCALE: 3/16" = 1'-0" DATE: 09/18/15

2/6



LOWER FLOOR
1,324 SQFT

TOTAL=2,130 SQ.FT



LEFT UNIT SV #39
FLOOR PLANS

Phone: 802-861-7600 Burlington, Vermont

Disclaimer: The floor plan shown is representative and not drawn to scale. Square footage calculations are approximate and do not include garages and porches. These plans are subject to revision without notice.

WWW.SOUTHVILLAGE.COM

REV.	
09/28/15	
04/12/16	

STERLING HOMES

1037 HINESBURG ROAD - SUITE A- SQ. BURLINGTON VT 05403

SCALE: 3/16" = 1'-0" DATE: 09/18/15

2/6