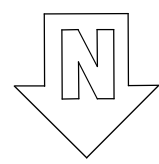


LEGEND:
 --- 15" - DROP HEADER
 [X] RAILING & BALLISTERS

FIRST FLOOR
 SCALE: 3/16" = 1'-0"



GARDENSIDE-FERNDALE

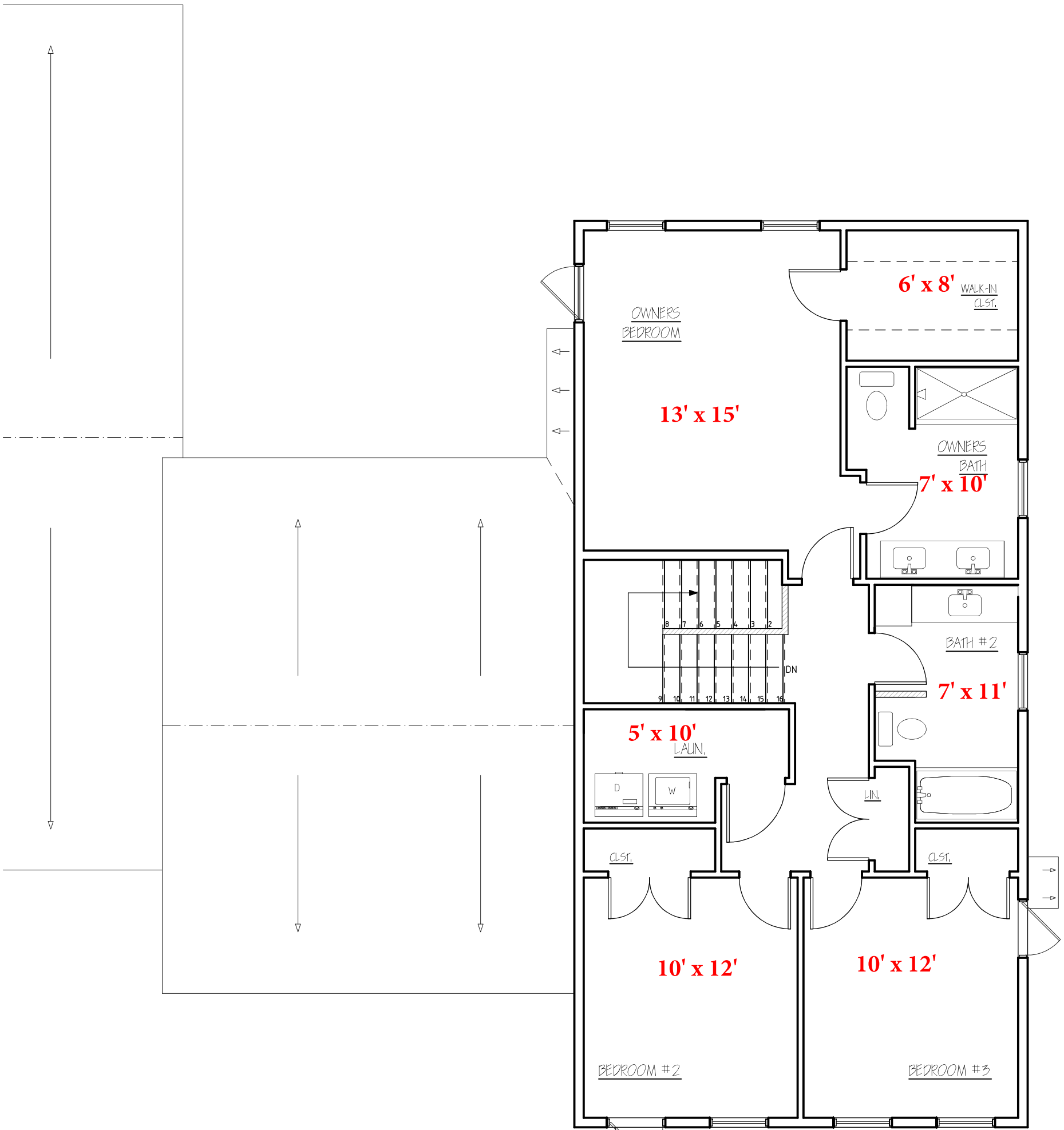
GS #16


REV	
01/09/23	

STERLING HOMES

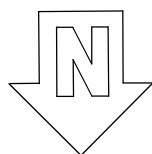
1037 HINESBURG ROAD / SUITE A / S. BURLINGTON, VT 05403
 SCALE: PER DRAWING DATE: 01/08/23

2/8

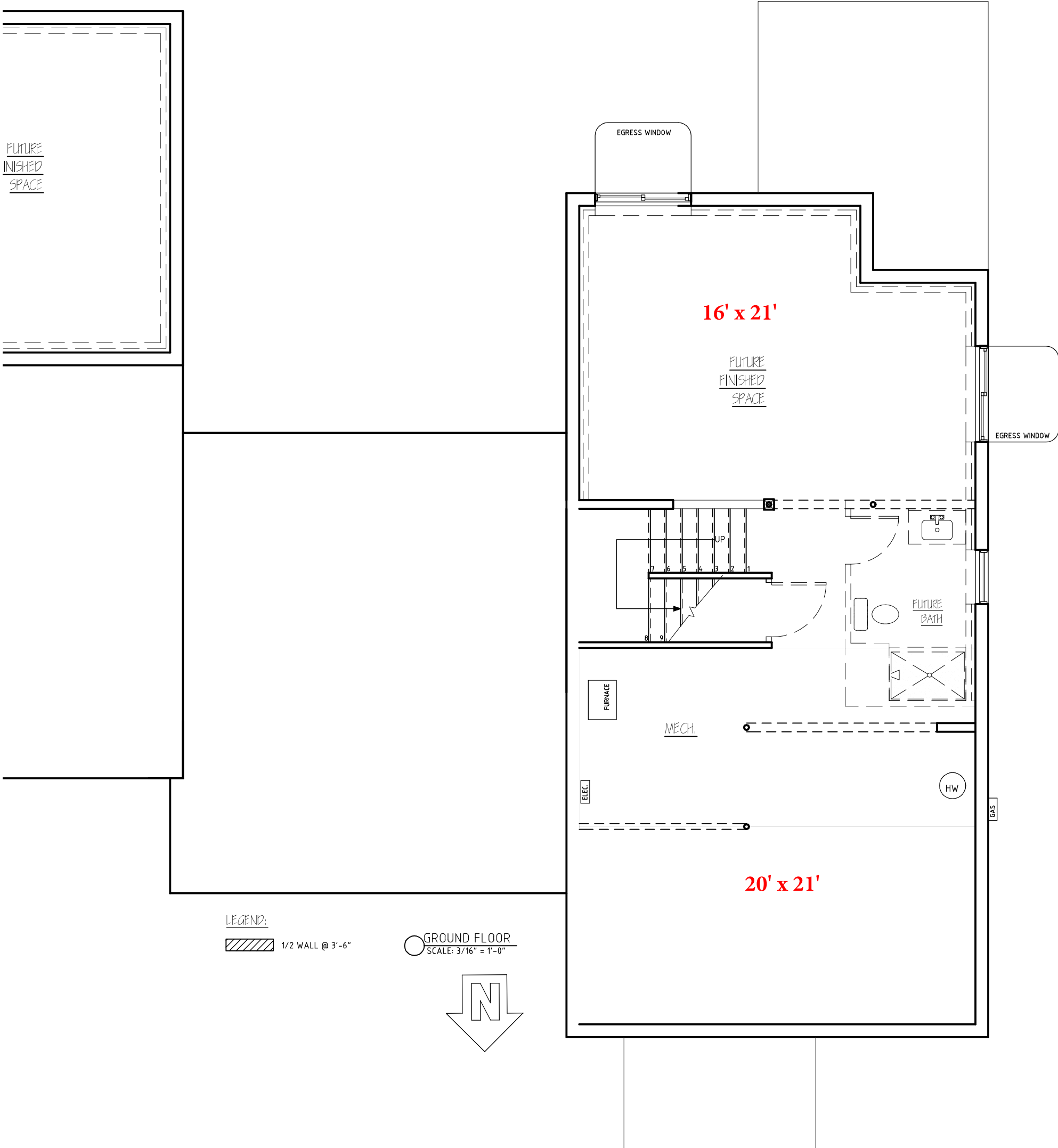


LEGEND:
 1/2 WALL @ 3'-6"

○ SECOND FLOOR
 SCALE: 3/16" = 1'-0"



GARDENSIDE-FERNDAL	
GS #16	
REV	
01/09/23	
 STERLING HOMES 1037 HINESBURG ROAD / SUITE A / S. BURLINGTON, VT 05403 SCALE: PER DRAWING DATE: 01/08/23	
3	8



GARDENSIDE-FERNDAL

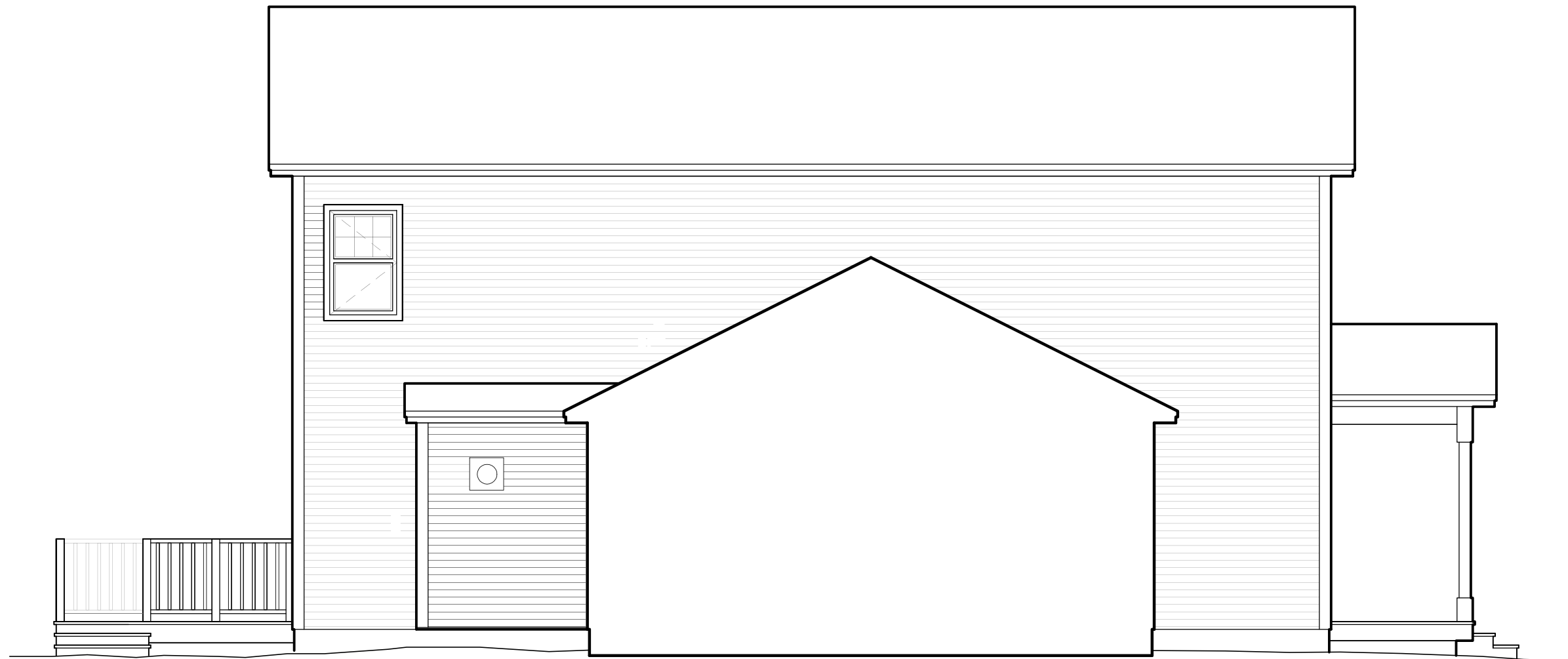
GS #16

REV	
01/09/23	

STERLING HOMES

1037 HINESBURG ROAD / SUITE A / S. BURLINGTON, VT 05403
SCALE: PER DRAWING DATE: 01/08/23

4/8



○ LEFT ELEVATION
SCALE: 3/16" = 1'-0"

GARDENSIDE-FERNDALE	
GS#16	
REV	
	1037 HINESBURG ROAD / SUITE A / S. BURLINGTON, VT 05403
	SCALE: 3/16" = 1'-0" DATE: 01/08/23
	7/8



RIGHT ELEVATION
SCALE: 3/16" = 1'-0"

GARDENSIDE-FERNDALE	
GS#16	
REV	 STERLING HOMES
	1037 HINESBURG ROAD / SUITE A / S. BURLINGTON, VT 05403
	SCALE: 3/16" = 1'-0" DATE: 01/08/23
	6/8



○ REAR ELEVATION
SCALE: 3/16" = 1'-0"

GARDENSIDE-FERNDALE	
GS#16	
REV	<p>STERLING HOMES</p> <p>1037 HINESBURG ROAD / SUITE A / S. BURLINGTON, VT 05403 SCALE: 3/16" = 1'-0" DATE: 01/08/23</p>
	8/8