
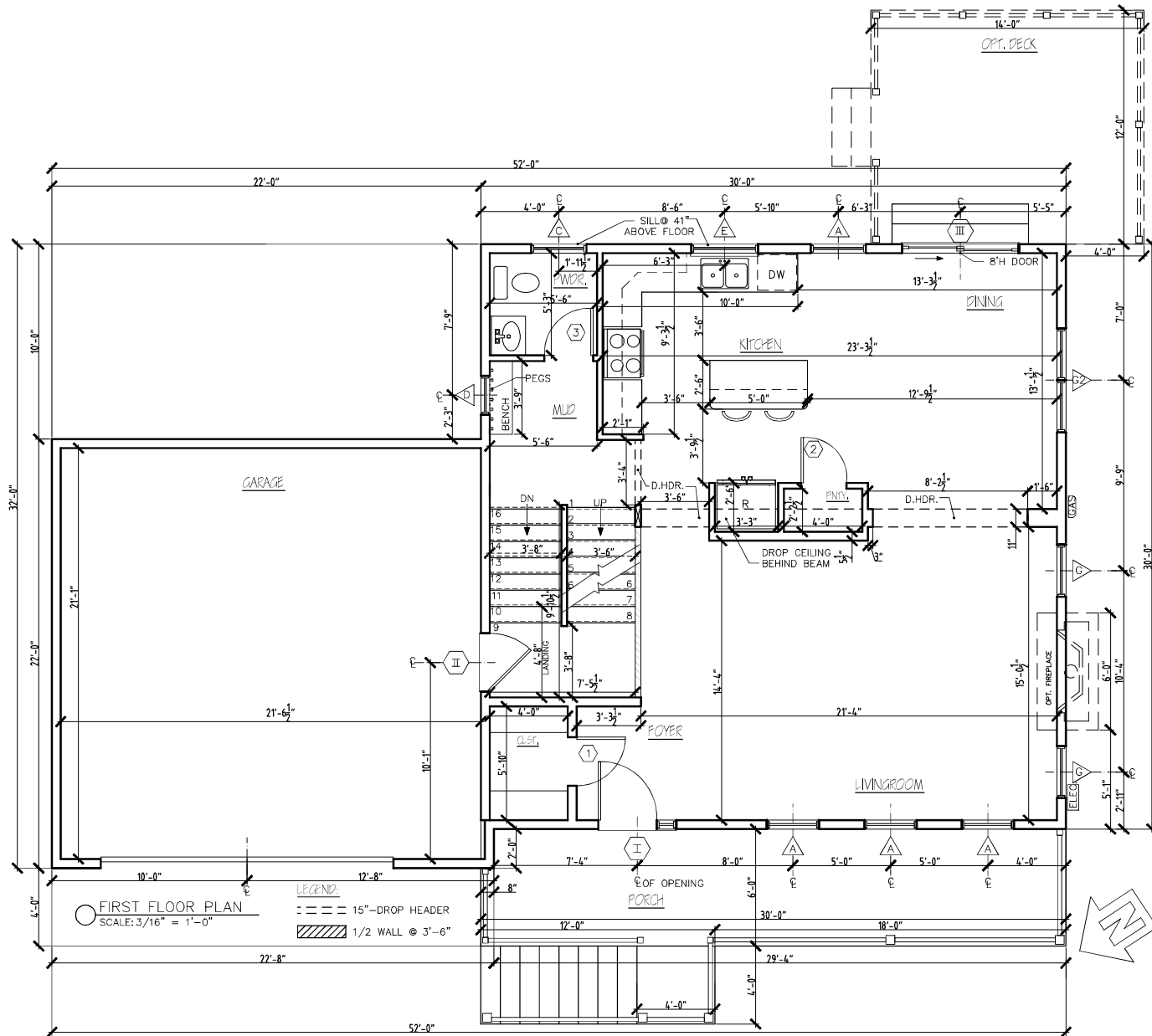




○ FRONT ELEVATION
SCALE: 3/16" = 1'-0"

CLEARVIEW	
CV#36 - SPRUCE	
REV.	
04/03/23	
04/04/23	
04/07/23	
 STERLING HOMES	
<small>1037 HINESBURG ROAD / SUITE A / S. BURLINGTON, VT 05403 SCALE: 3/16" = 1'-0" DATE: 04/02/23</small>	



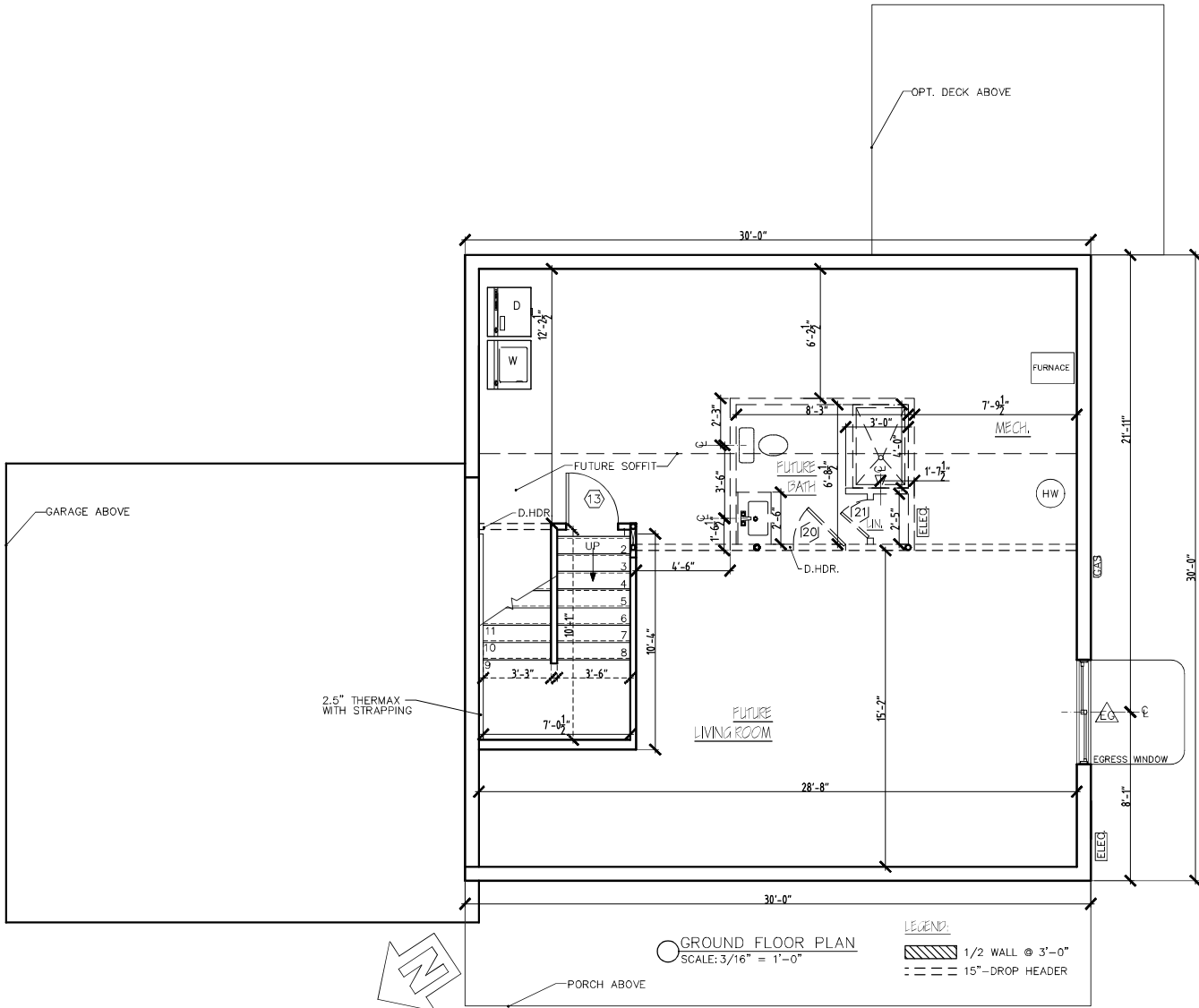
FIRST FLOOR PLAN
SCALE: 3/16" = 1'-0"

LEGEND:
 --- 15" DROP HEADER
 [Hatched Box] 1/2 WALL @ 3'-6"

CLEARVIEW
 CV#36 - SPRUCE

REV.
 04/03/23
 04/04/23
 04/07/23

STERLING HOMES
 1037 HINESBURG ROAD / SUITE A / S. BURLINGTON, VT 05403
 SCALE: 3/16" = 1'-0" DATE: 03/31/23



GROUND FLOOR PLAN
SCALE: 3/16" = 1'-0"

LEGEND:
 [Hatched Box] 1/2 WALL @ 3'-0"
 [Dashed Line] 15"-DROP HEADER

CLEARVIEW
 CV#36 - SPRUCE

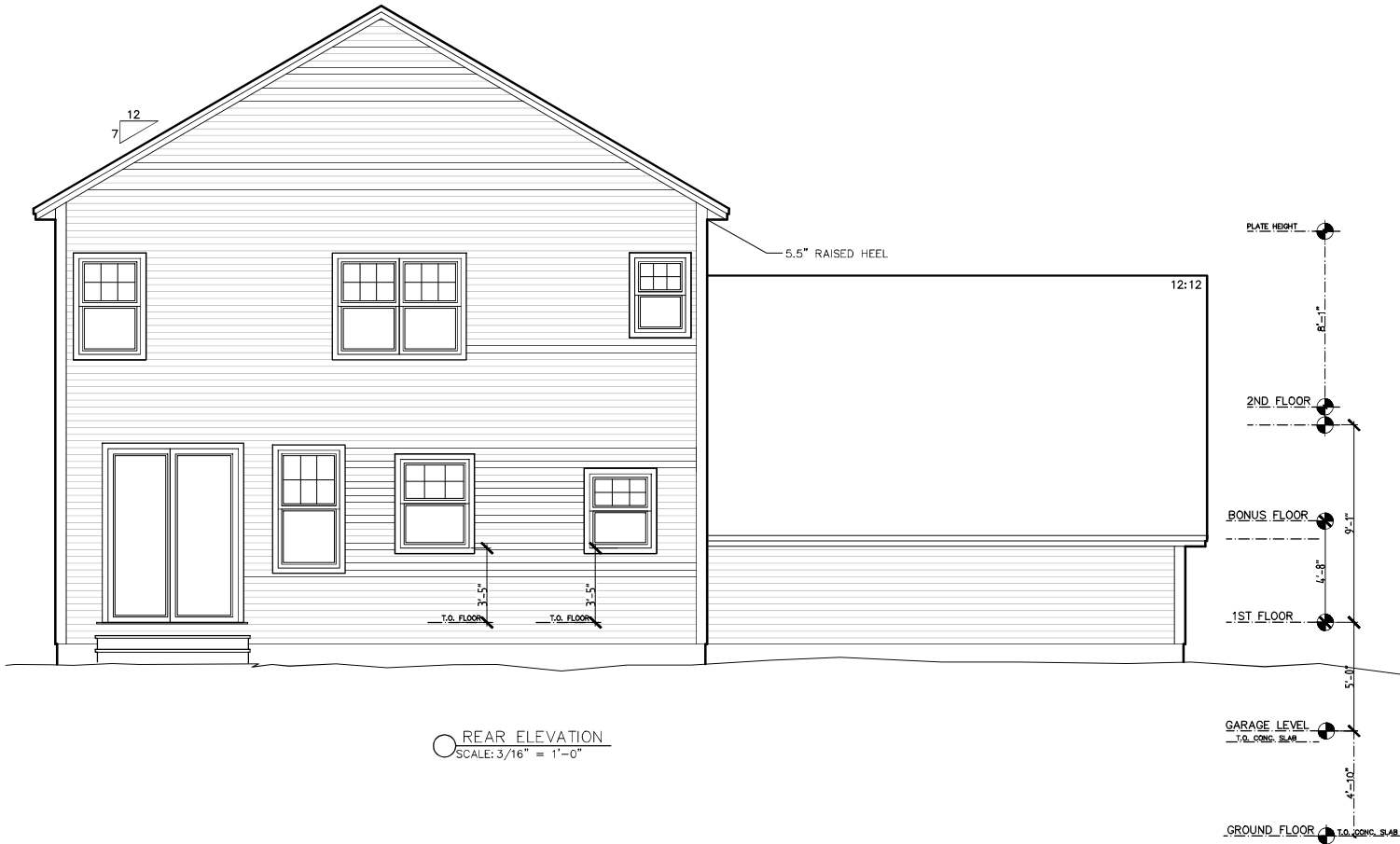
REV.	
04/03/23	
04/04/23	
04/07/23	

STERLING HOMES
 1037 HINESBURG ROAD / SUITE A / S. BURLINGTON, VT 05403
 SCALE: 3/16" = 1'-0" DATE: 04/02/23



LEFT ELEVATION
SCALE: 3/16" = 1'-0"

CLEARVIEW	
CV#36 - SPRUCE	
REV.	
04/03/23	
04/04/23	
04/07/23	
 STERLING HOMES	
<small>1037 HINESBURG ROAD / SUITE A / S. BURLINGTON, VT 05403 6 SCALE: 3/16" = 1'-0" DATE: 04/02/23 8</small>	

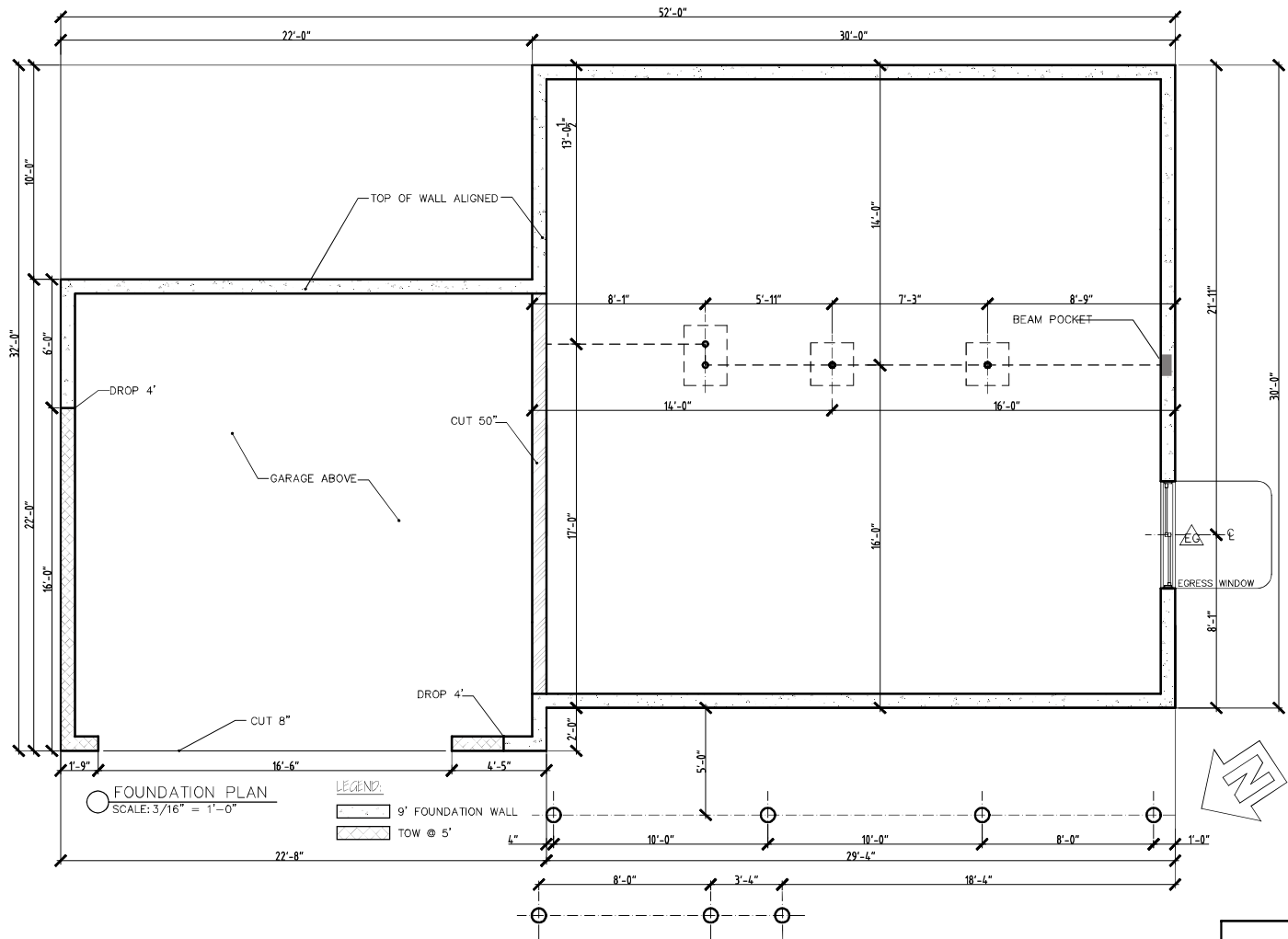


REAR ELEVATION
SCALE: 3/16" = 1'-0"

CLEARVIEW	
CV#36 - LEMOINE	
REV	
04/03/23	
 STERLING HOMES <small>1037 HINESBURG ROAD / SUITE A / S. BURLINGTON, VT 05403 P. 8</small> <small>SCALE: 3/16" = 1'-0" DATE: 04/02/23</small>	



CLEARVIEW	
CV#36 - SPRUCE	
REV.	
04/03/23	
04/04/23	
04/07/23	
1037 HINESBURG ROAD / SUITE A / S. BURLINGTON, VT 05403 SCALE: 3/16" = 1'-0" DATE: 04/02/23	



FOUNDATION PLAN
SCALE: 3/16" = 1'-0"

LEGEND

- 9' FOUNDATION WALL
- TOW @ 5'



CLEARVIEW	
CV#36 - SPRUCE	
REV	
04/03/23	
04/04/23	
04/07/23	
STERLING HOMES	
1037 HINESBURG ROAD / SUITE A / S. BURLINGTON, VT 05403 5/2 SCALE: 3/16" = 1'-0" DATE: 04/02/23	