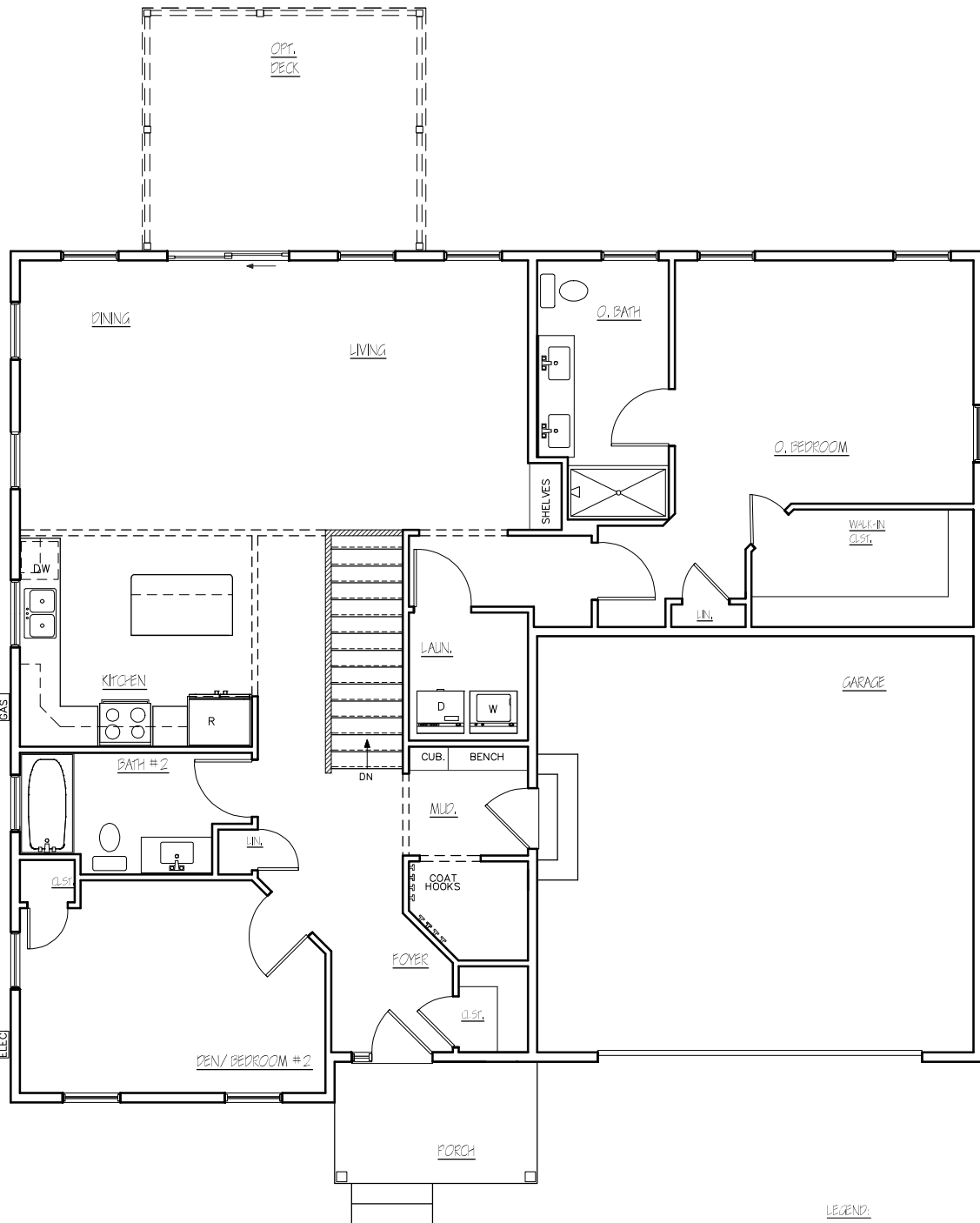




○ FRONT ELEVATION
SCALE: 3/16" = 1'-0"

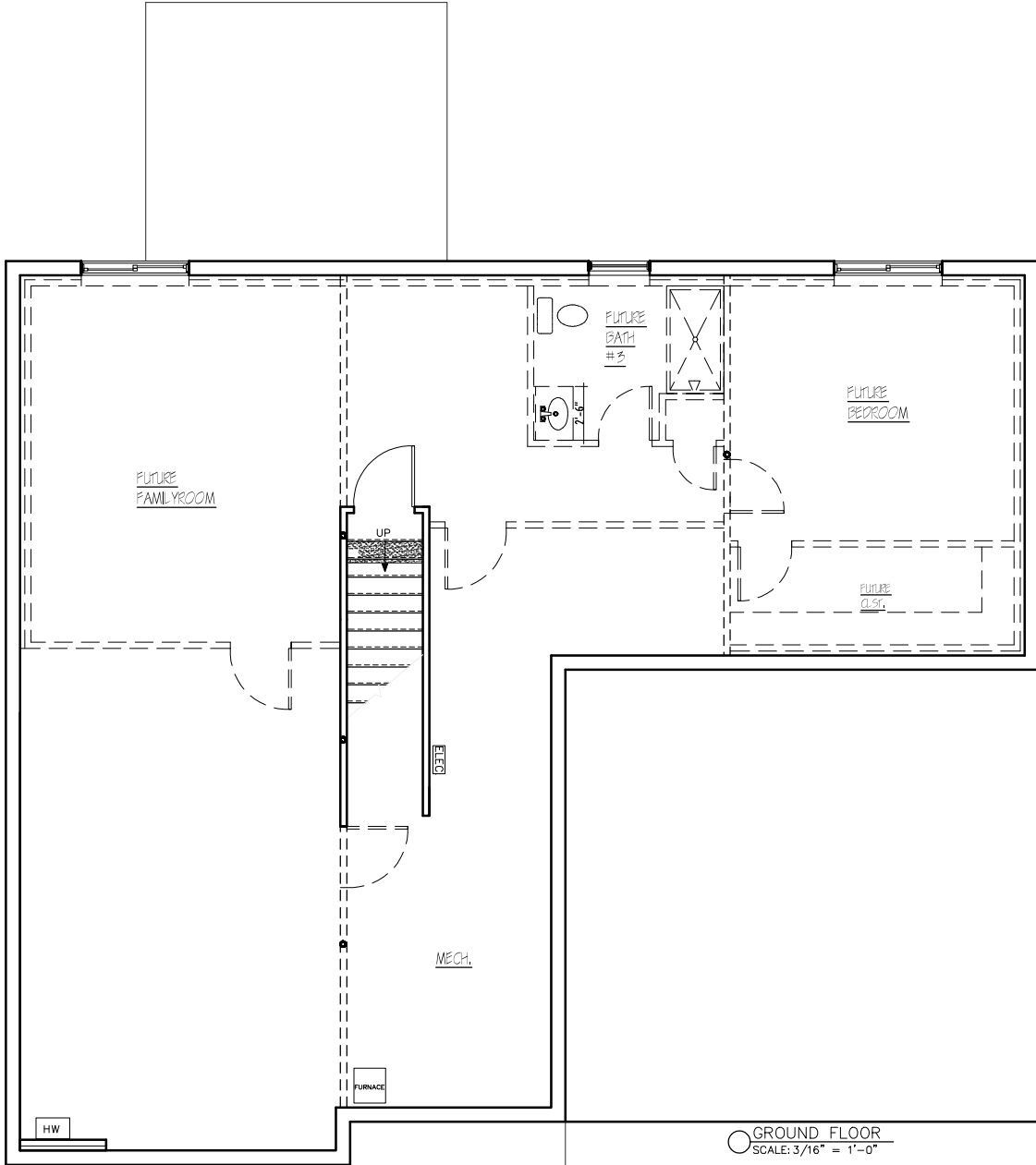
BAKER GR	
REV	 STERLING HOMES
1037 HINESBURG ROAD / SUITE A / S. BURLINGTON, VT 05403 1 SCALE: 3/16" = 1'-0" DATE: 08/25/23 2	




 ○ FIRST FLOOR
 SCALE: 3/16" = 1'-0"

LEGEND:
 - - - - 15" DROP HEADER
 3'-6" HALF WALL

BAKER GR	
REV.	 STERLING HOMES <small>1037 HINESBURG ROAD / SUITE A / S. BURLINGTON, VT 05403 SCALE: 3/16" = 1'-0" DATE: 08/25/23</small>
	2/7

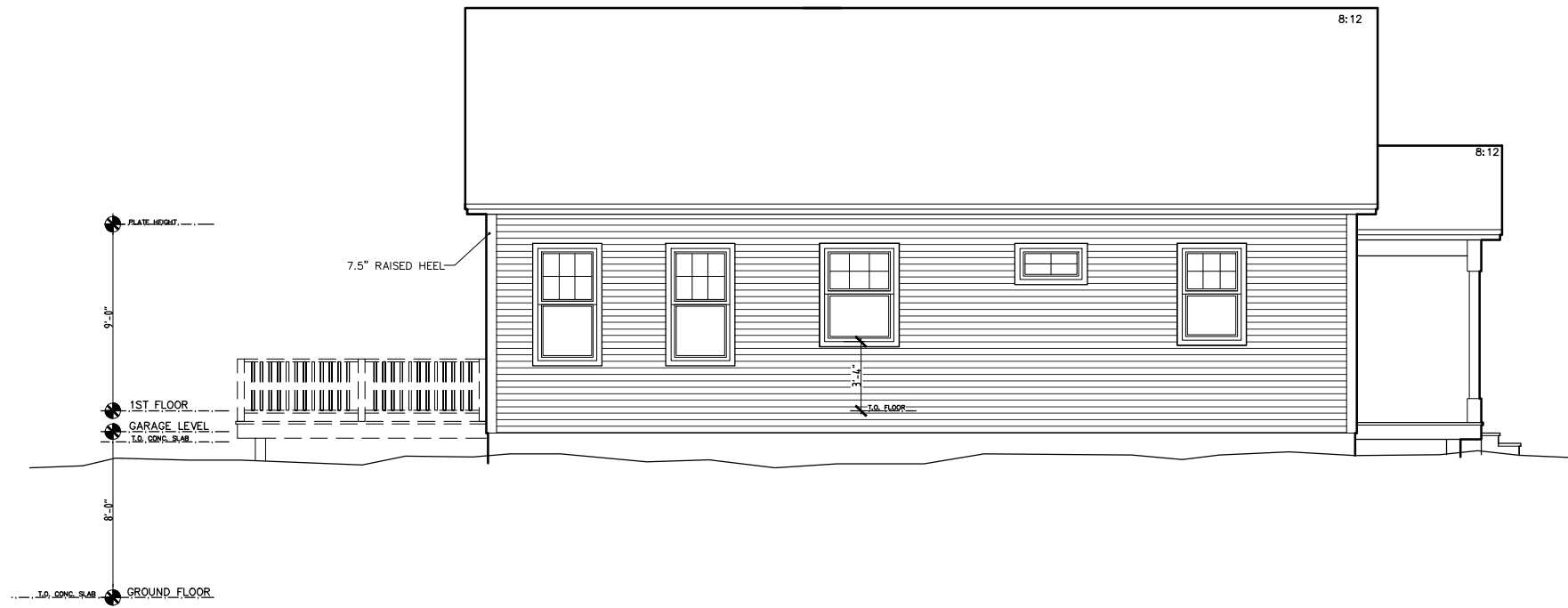


○ GROUND FLOOR
SCALE: 3/16" = 1'-0"

LEGEND
 - - - - 15"-DROP HEADER
 ▨ 3'-6" HALF WALL

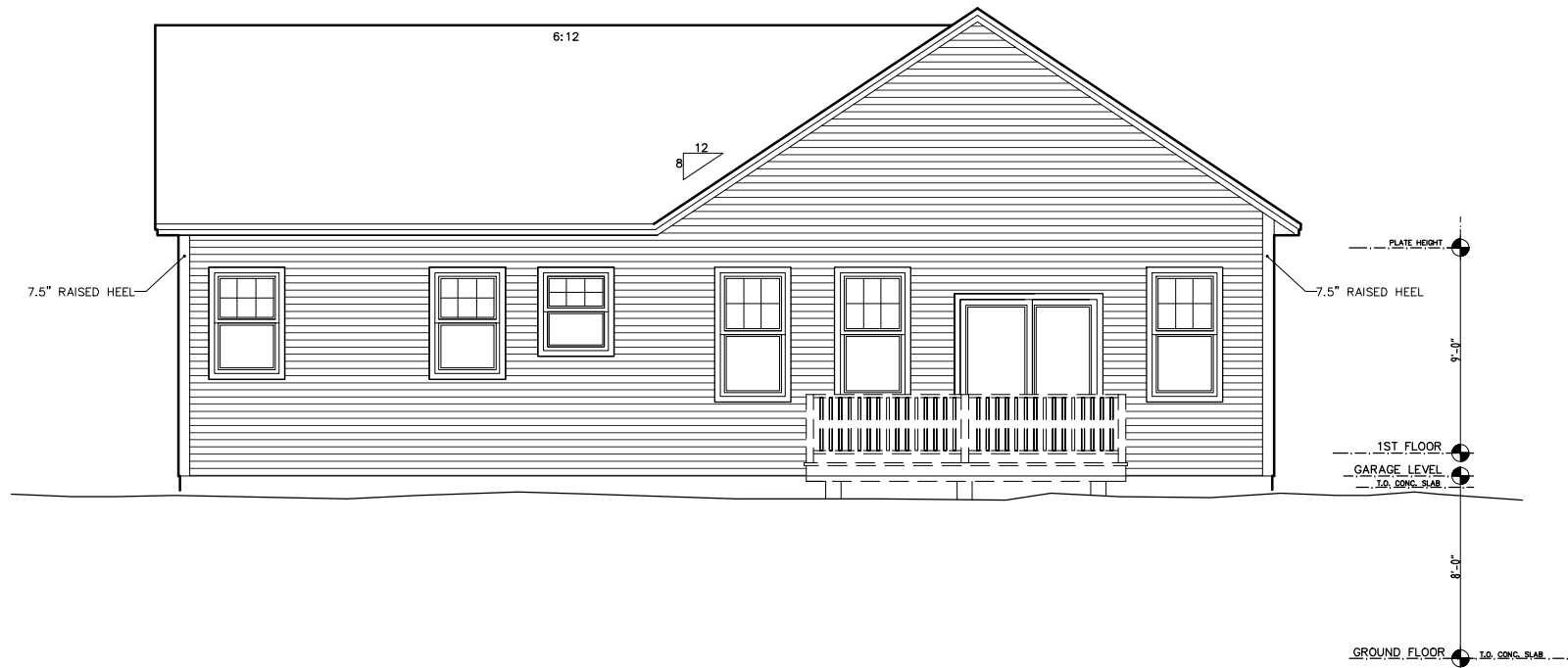


BAKER GR	
REV.	
 STERLING HOMES <small>1037 HINESBURG ROAD / SUITE A / S. BURLINGTON, VT 05403 SCALE: 3/16" = 1'-0" DATE: 08/25/23</small>	
3	7

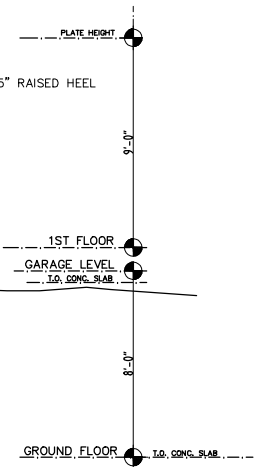


○ LEFT ELEVATION
SCALE: 3/16" = 1'-0"

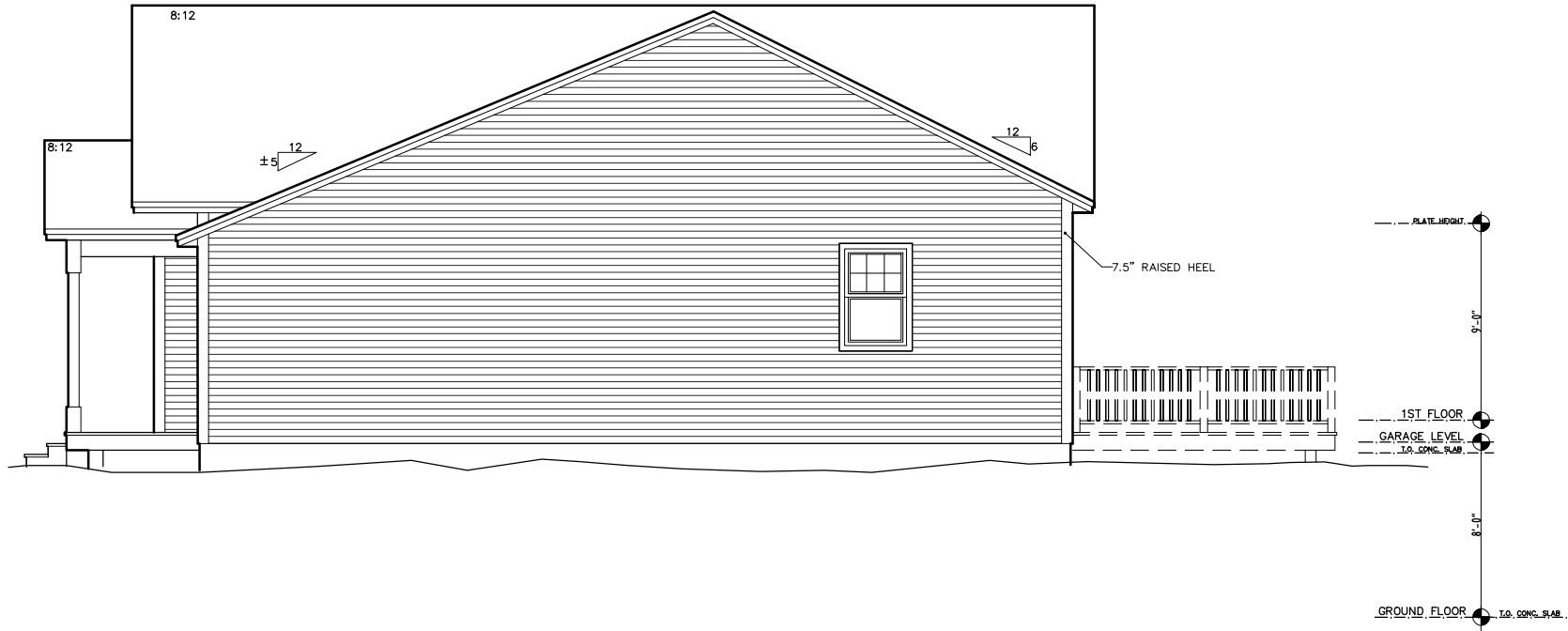
BAKER GR	
REV	
 STERLING HOMES	
1037 HINESBURG ROAD / SUITE A / S. BURLINGTON, VT 05403	
SCALE: 3/16" = 1'-0"	DATE: 08/25/23



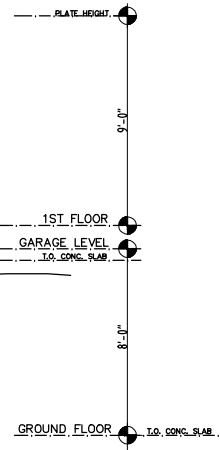
○ REAR ELEVATION
SCALE: 3/16" = 1'-0"



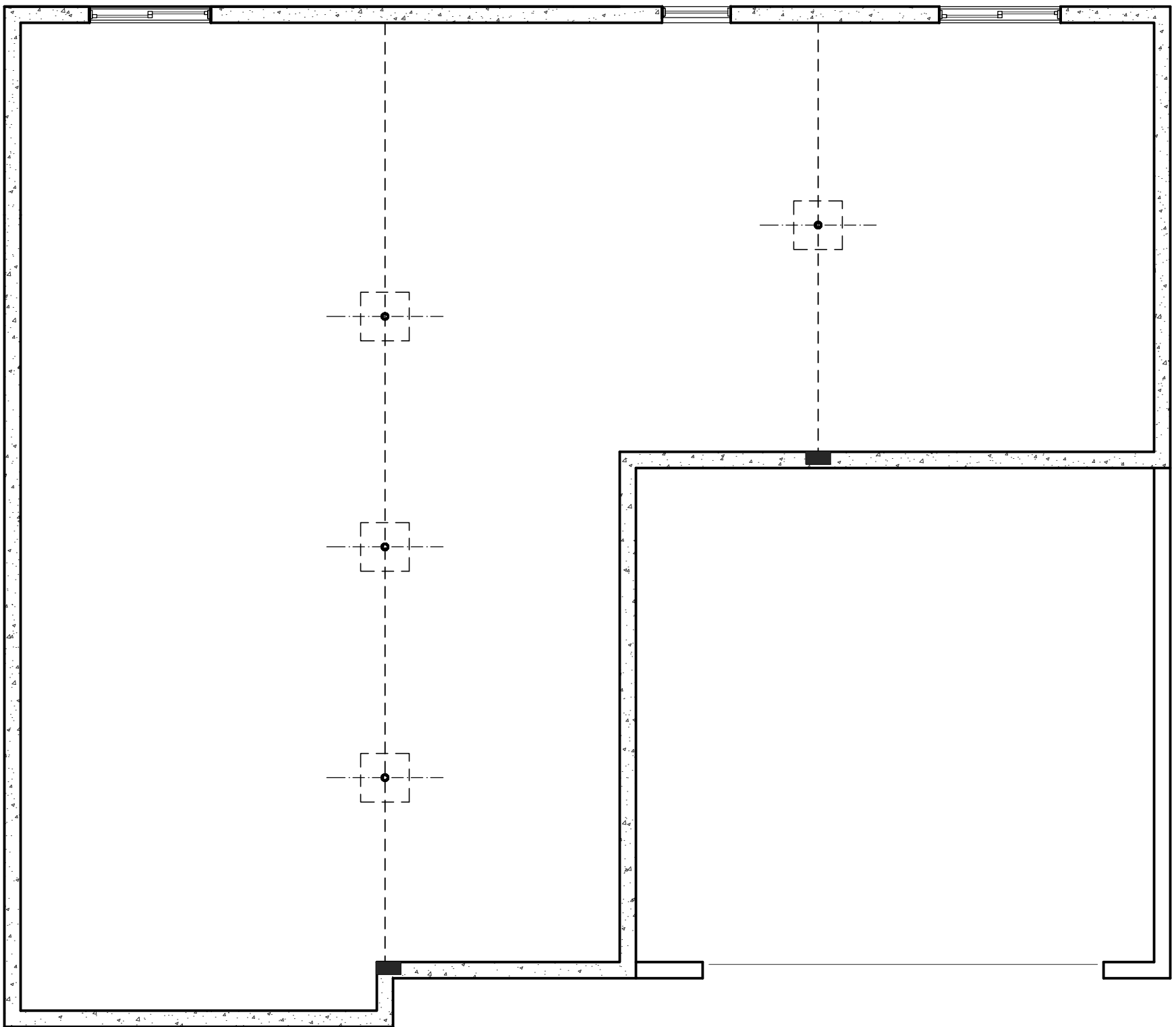
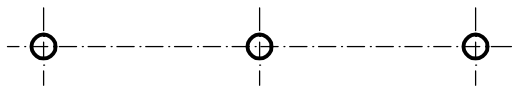
BAKER GR	
REV	STERLING HOMES
	1037 HINESBURG ROAD / SUITE A / S. BURLINGTON, VT 05403
	SCALE: 3/16" = 1'-0" DATE: 08/25/23



○ RIGHT ELEVATION
SCALE: 3/16" = 1'-0"




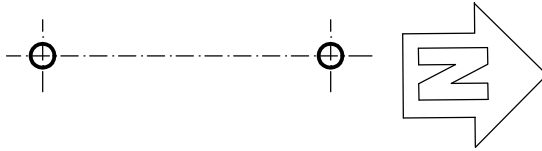
BAKER GR	
REV	
<small>1037 HINESBURG ROAD / SUITE A / S. BURLINGTON, VT 05403 67</small> <small>SCALE: 3/16" = 1'-0" DATE: 08/25/23</small>	



LEGEND:

 8' FOUNDATION WALL

 FOUNDATION PLAN
SCALE: 3/16" = 1'-0"



BAKER GL	
REV.	 1037 HINESBURG ROAD / SUITE A / S. BURLINGTON, VT 05403 SCALE: 3/16" = 1'-0" DATE: 08/25/23
	4/7