



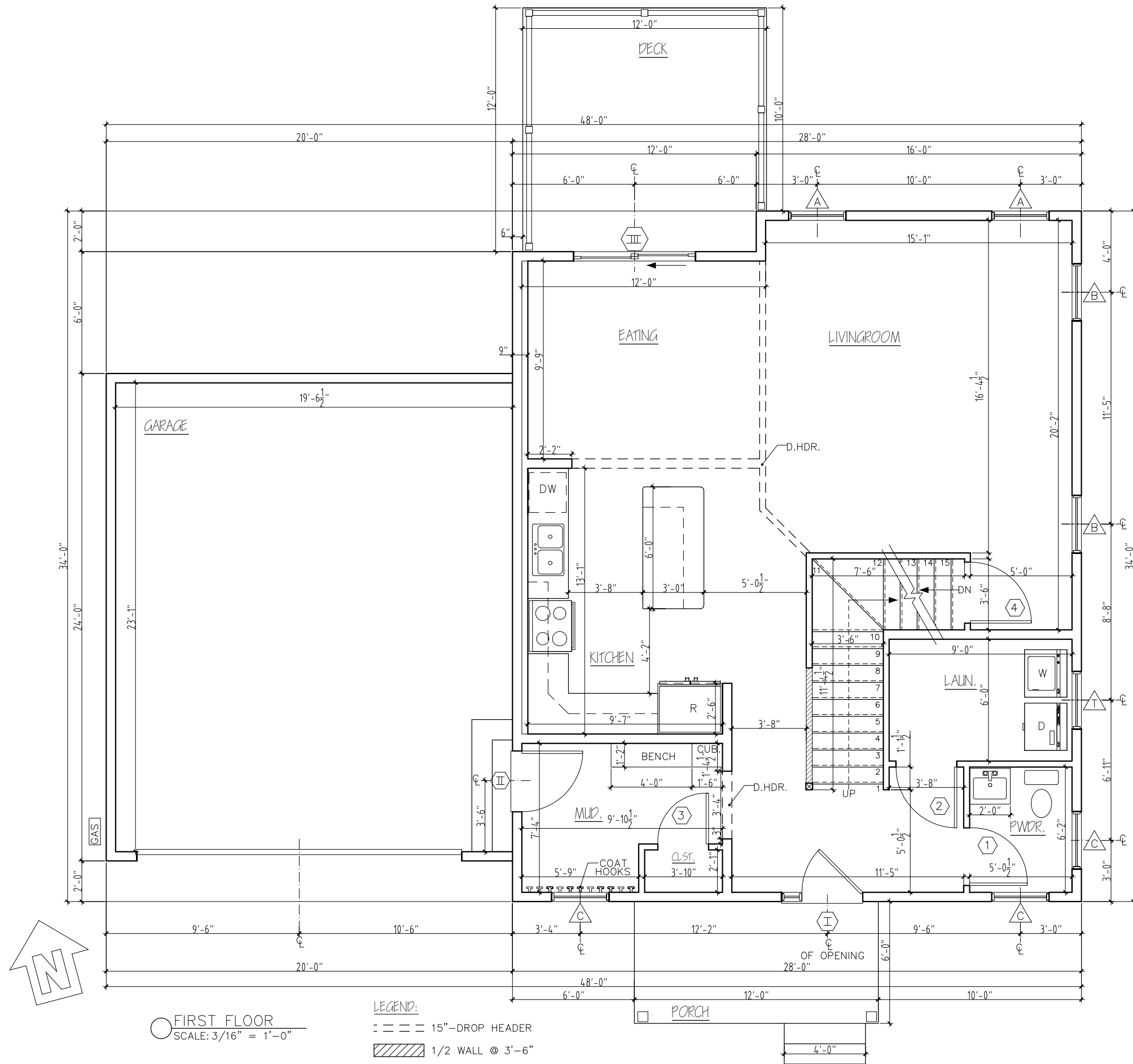
○ FRONT ELEVATION
SCALE: 3/16" = 1'-0"

BARNABAS COURT
UNIT B - COLCHESTER, VT

REV.
01/20/26



1037 HINESBURG ROAD / SUITE A / S. BURLINGTON, VT 05403
SCALE: 3/16" = 1'-0" DATE: 01/12/26



○ FIRST FLOOR
SCALE: 3/16" = 1'-0"

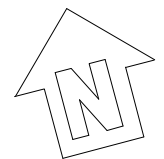
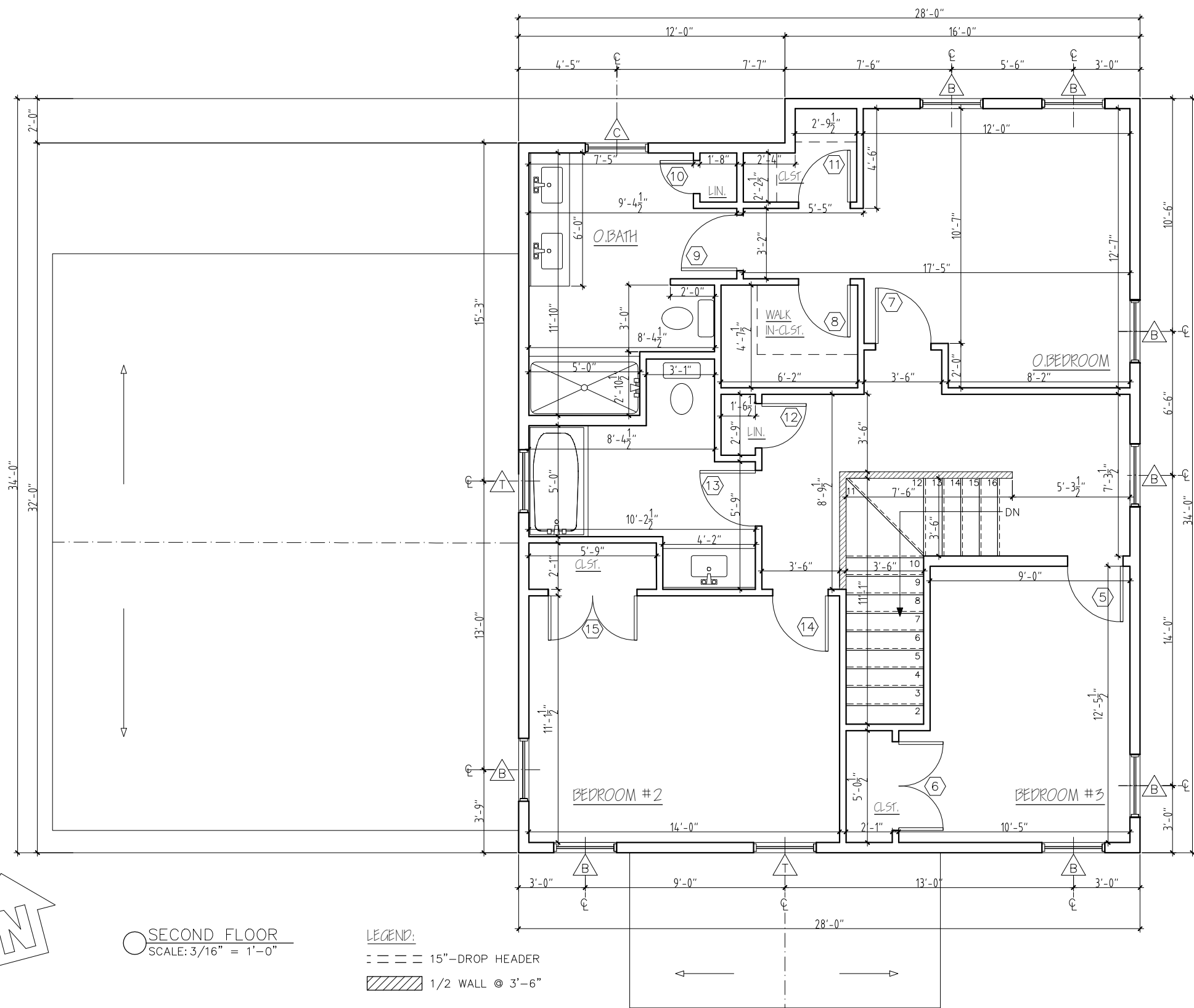
LEGEND:
 --- 15"-DROP HEADER
 ▨ 1/2 WALL @ 3'-6"

BARNABAS COURT
 UNIT B - COLCHESTER, VT

REV.
 01/20/26

STERLING HOMES
 1037 HINESBURG ROAD / SUITE A / S. BURLINGTON, VT 05403
 SCALE: 3/16" = 1'-0" DATE: 01/19/26

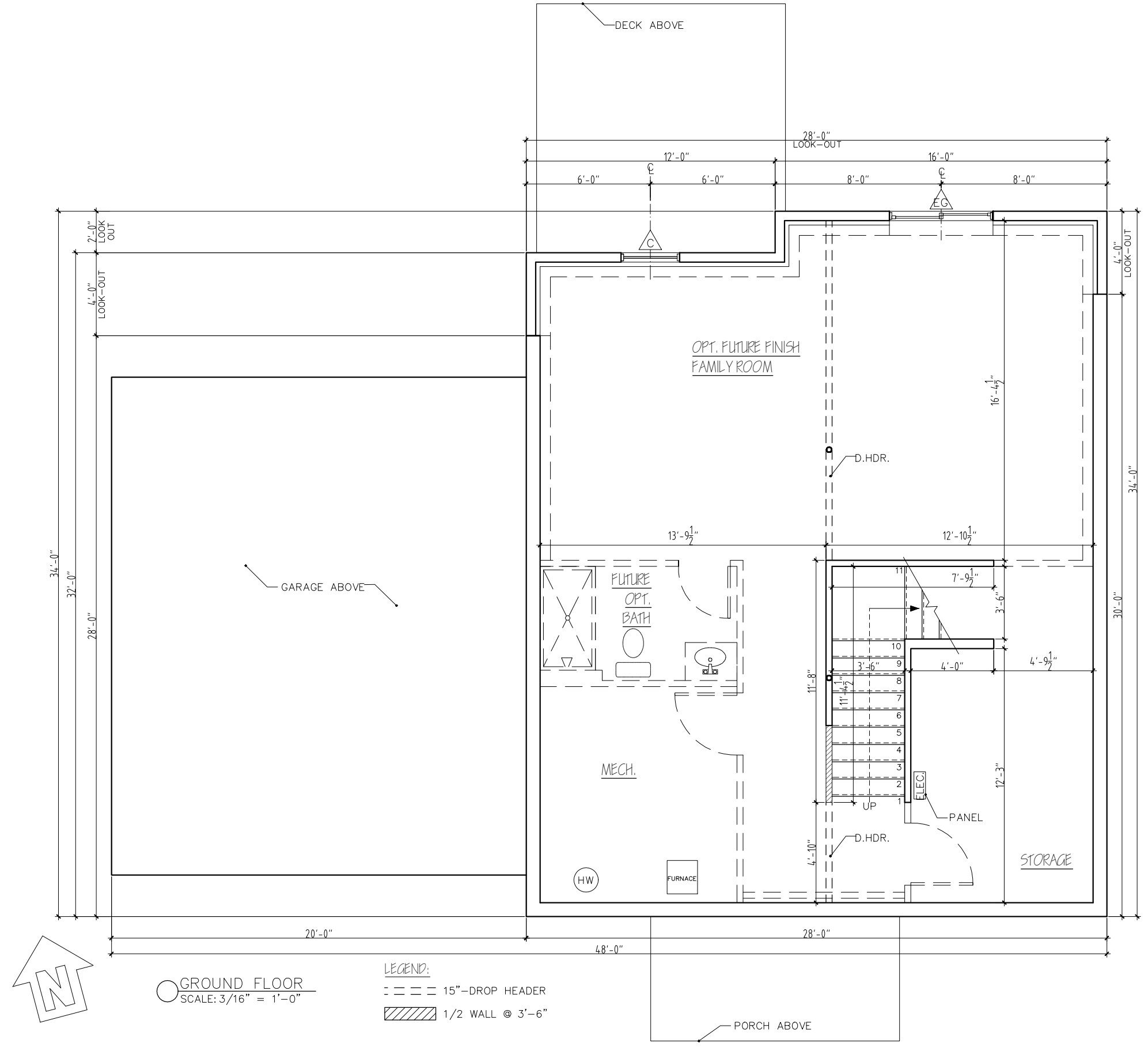
2/8



○ SECOND FLOOR
SCALE: 3/16" = 1'-0"

LEGEND:
 --- 15" DROP HEADER
 ▨ 1/2 WALL @ 3'-6"

BARNABAS COURT	
UNIT B - COLCHESTER, VT	
REV.	
01/20/26	<small>1037 HINESBURG ROAD / SUITE A / S. BURLINGTON, VT 05403</small> <small>SCALE: 3/16" = 1'-0" DATE: 01/19/26</small>
	3/8



○ GROUND FLOOR
SCALE: 3/16" = 1'-0"

LEGEND:
 --- 15" DROP HEADER
 ▨ 1/2 WALL @ 3'-6"

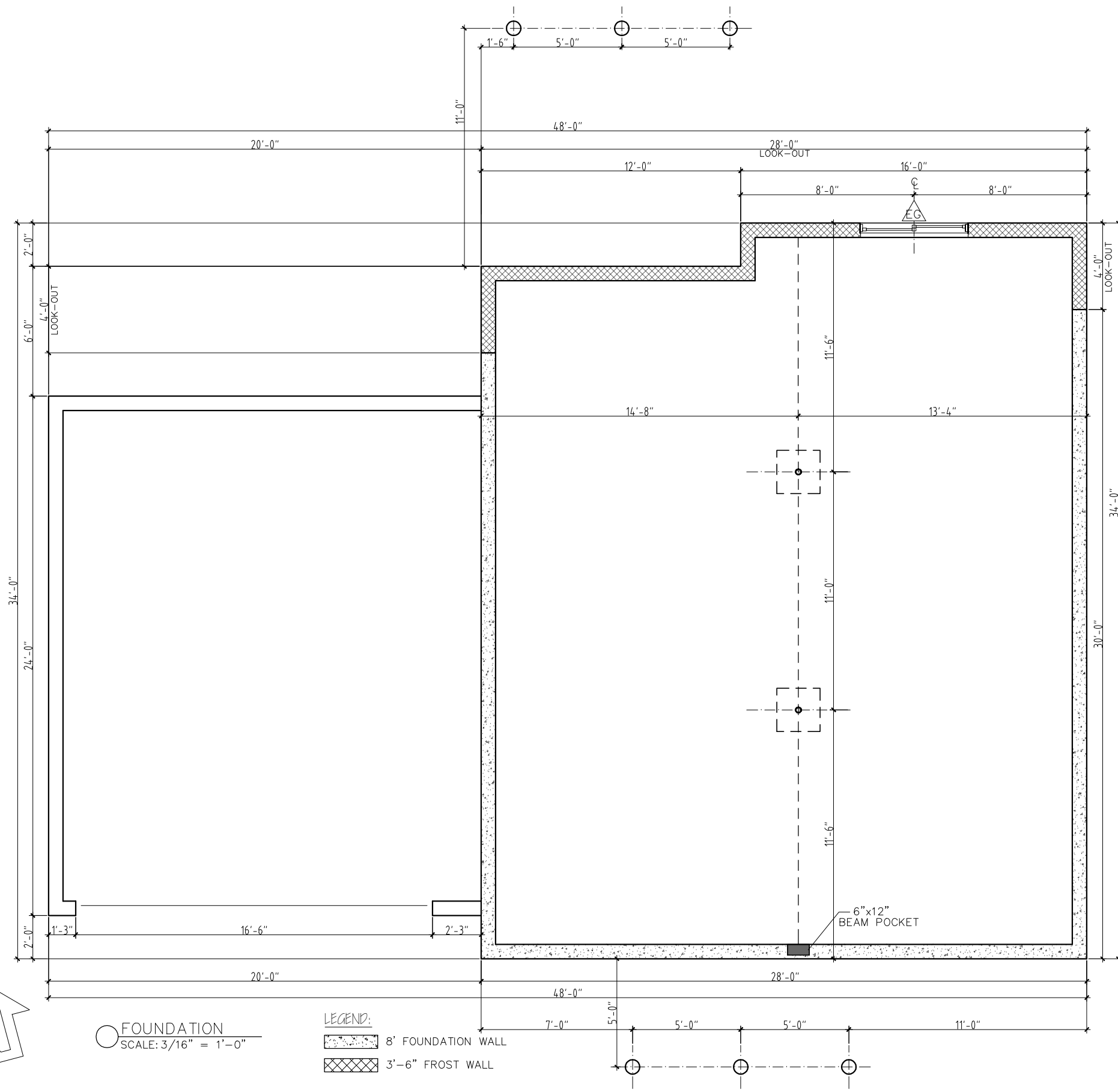
BARNABAS COURT
 UNIT B - COLCHESTER, VT

REV.
 01/20/26



STERLING HOMES

1037 HINESBURG ROAD / SUITE A / S. BURLINGTON, VT 05403
 SCALE: 3/16" = 1'-0" DATE: 01/19/26

2/8



FOUNDATION
SCALE: 3/16" = 1'-0"

- LEGEND:
-  8' FOUNDATION WALL
 -  3'-6" FROST WALL

BARNABAS COURT
UNIT B - COLCHESTER, VT

REV.	
01/20/26	

STERLING HOMES
1037 HINESBURG ROAD / SUITE A / S. BURLINGTON, VT 05403
SCALE: 3/16" = 1'-0" DATE: 01/19/26

5/8