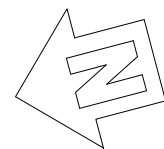


LEGEND:
 --- 15" DROP HEADER
 ▨ 1/2 WALL @ 3'-6"

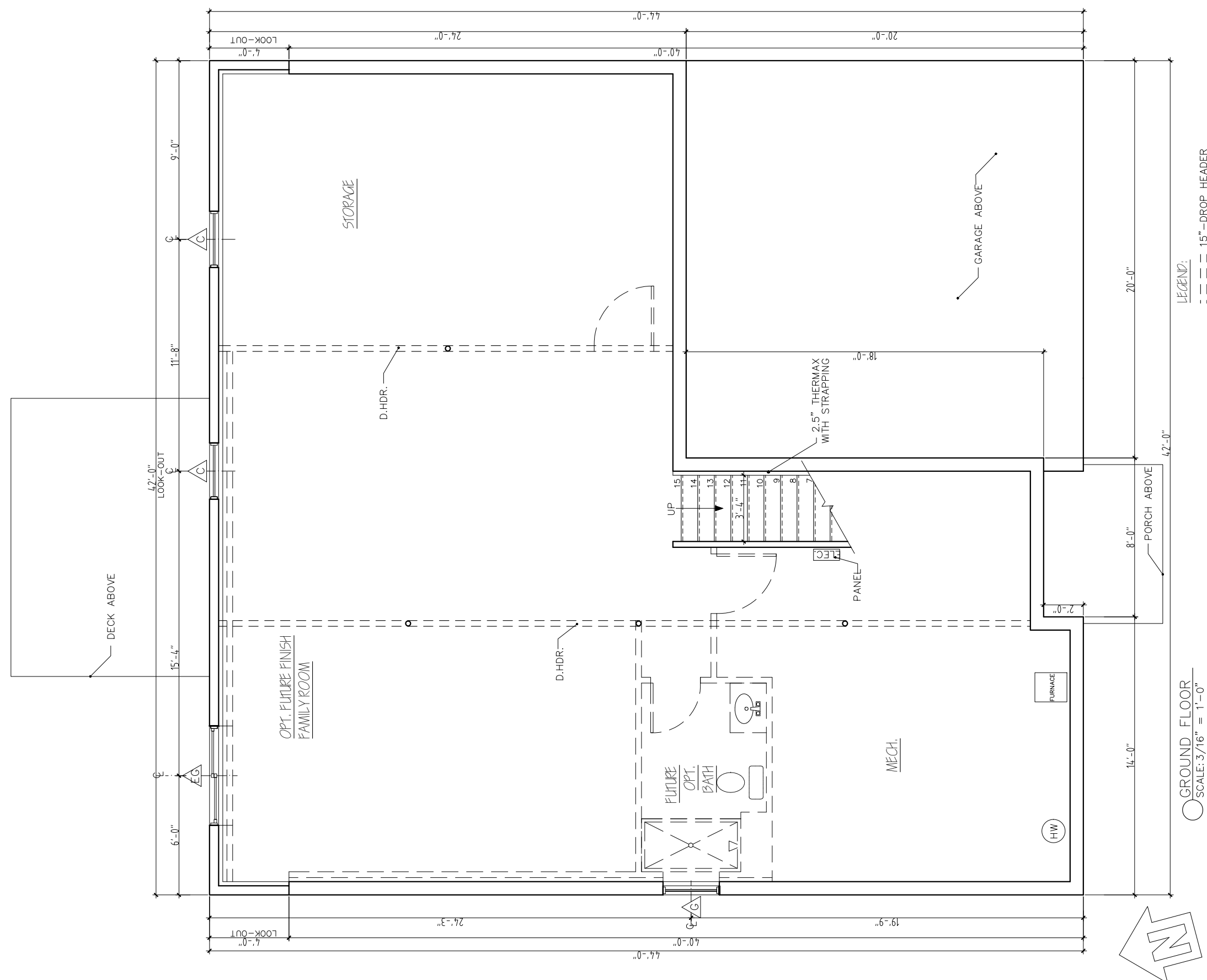
○ FIRST FLOOR
 SCALE: 3/16" = 1'-0"



BARNABAS COURT
 CHAMPLAIN — COLCHESTER, VT

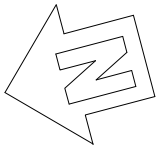
| | |
|----------|--|
| REV. | |
| 03/25/26 | |
| | |
| | |
| | |
| | |

STERLING HOMES
 1037 HINESBURG ROAD / SUITE A / S. BURLINGTON, VT 05403
 SCALE: 3/16" = 1'-0" DATE: 01/12/26



LEGEND:
 --- 15" DROP HEADER

○ GROUND FLOOR
 SCALE: 3/16" = 1'-0"



BARNABAS COURT
 CHAMPLAIN — COLCHESTER, VT

| REV. | DESCRIPTION |
|----------|-------------|
| 03/25/26 | |
| | |
| | |
| | |
| | |
| | |

1037 HINESBURG ROAD / SUITE A / S. BURLINGTON, VT 05403
 SCALE: 3/16" = 1'-0" DATE: 01/12/26



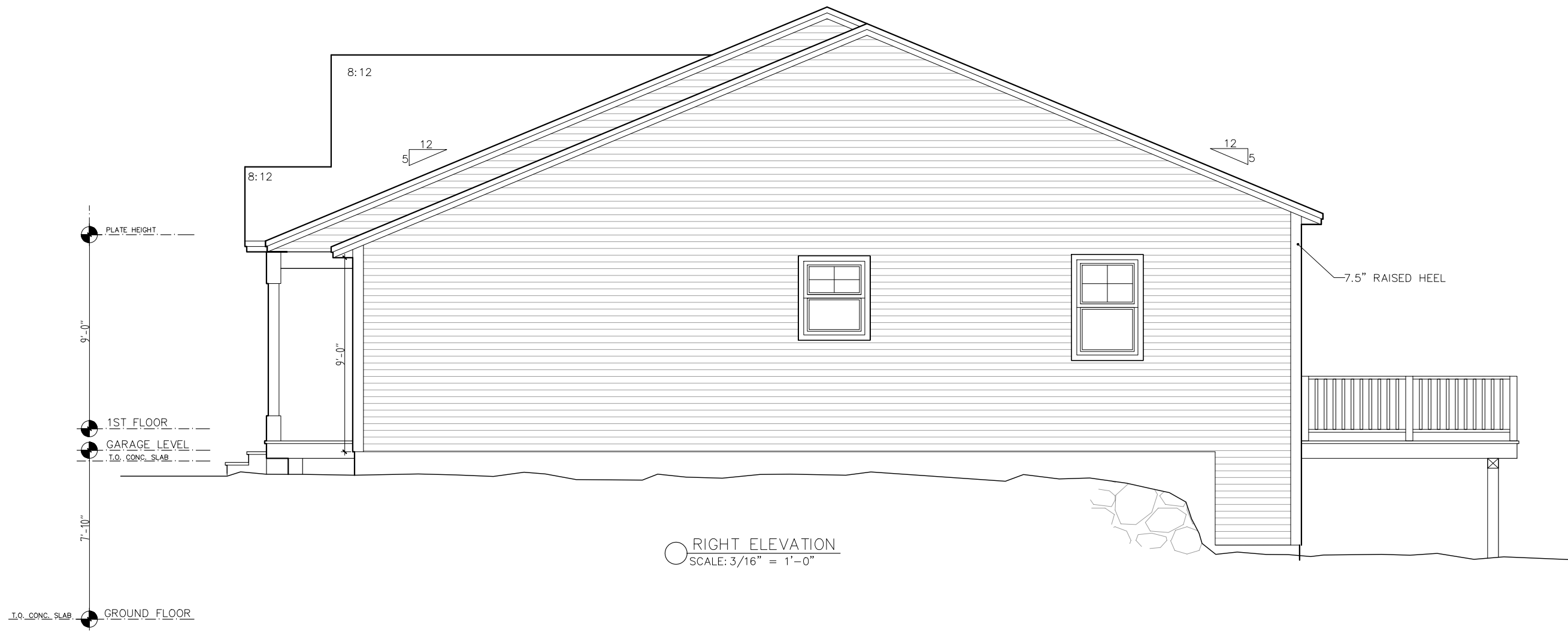
LEFT ELEVATION
SCALE: 3/16" = 1'-0"

BARNABAS COURT
CHAMPLAIN — COLCHESTER, VT

| | |
|----------|--|
| REV. | |
| 03/25/26 | |
| | |
| | |
| | |
| | |
| | |

STERLING HOMES
1037 HINESBURG ROAD / SUITE A / S. BURLINGTON, VT 05403
SCALE: 3/16" = 1'-0" DATE: 01/12/26

6/7



BARNABAS COURT
CHAMPLAIN — COLCHESTER, VT

| | |
|----------|--|
| REV. | |
| 03/25/26 | |
| | |
| | |
| | |
| | |
| | |

STERLING HOMES

1037 HINESBURG ROAD / SUITE A / S. BURLINGTON, VT 05403
SCALE: 3/16" = 1'-0" DATE: 01/12/26

5/7

