


B FIRST FLOOR
 SCALE: 3/16" = 1'-0"
 LEGEND:
 - - - - - 15" DROP HEADER
 [Hatched Box] 1/2 WALL @ 3'-6"

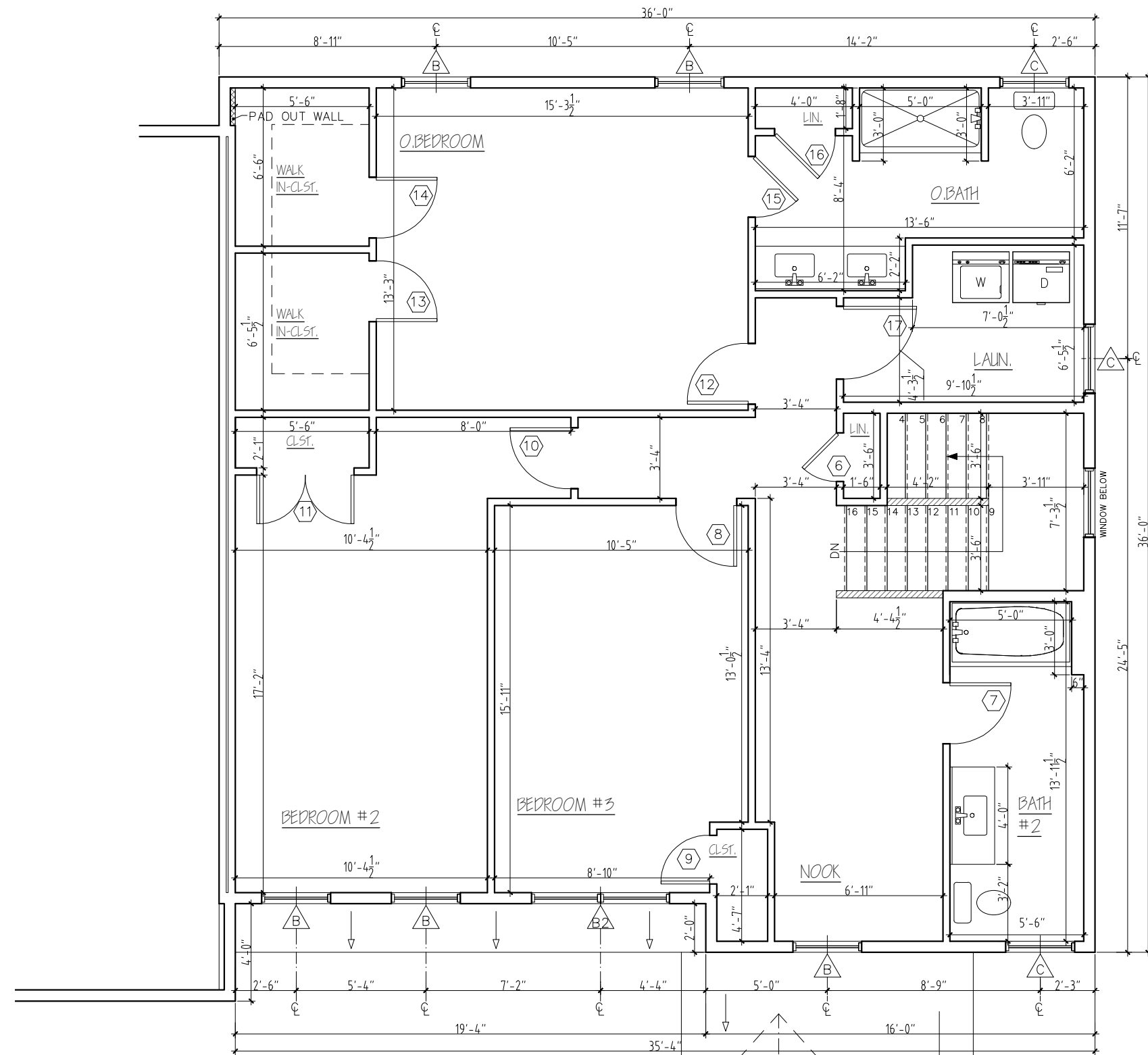
BARNABAS COURT
 UNIT G - COLCHESTER, VT



STERLING HOMES

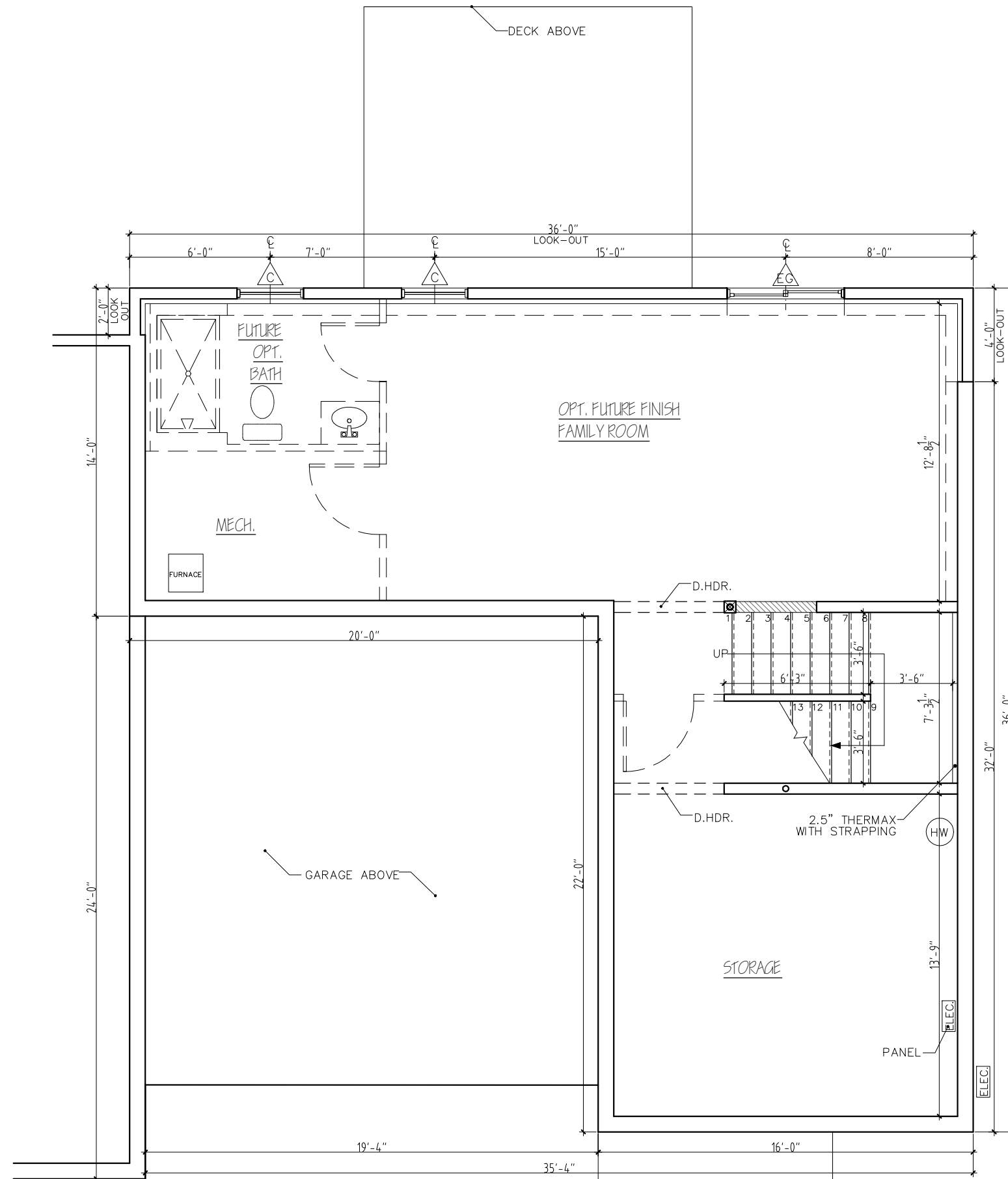
1037 HINESBURG ROAD / SUITE A / S. BURLINGTON, VT 05403
 SCALE: 3/16" = 1'-0" DATE: 01/26/26

REV.	
02/04/26	



B SECOND FLOOR
 SCALE: 3/16" = 1'-0"
 LEGEND:
 1/2 WALL @ 3'-6"


BARNABAS COURT	
UNIT G - COLCHESTER, VT	
REV.	
02/04/26	<small>1037 HINESBURG ROAD / SUITE A / S. BURLINGTON, VT 05403</small> <small>SCALE: 3/16" = 1'-0" DATE: 01/26/26</small>
	3/8



Ⓑ GROUND FLOOR
SCALE: 3/16" = 1'-0"

LEGEND:
 --- 15" DROP HEADER
 [Hatched Box] 1/2 WALL @ 3'-6"

PORCH ABOVE

BARNABAS COURT	
UNIT G - COLCHESTER, VT	
REV. 02/04/26	 STERLING HOMES <small>1037 HINESBURG ROAD / SUITE A / S. BURLINGTON, VT 05403</small> <small>SCALE: 3/16" = 1'-0" DATE: 01/26/26</small>
	3/8



(B) REAR ELEVATION
SCALE: 3/16" = 1'-0"

BARNABAS COURT

UNIT G - COLCHESTER, VT

REV.
01/29/26
02/04/26



1037 HINESBURG ROAD / SUITE A / S. BURLINGTON, VT 05403
SCALE: 3/16" = 1'-0" DATE: 01/26/26



Ⓑ RIGHT ELEVATION
SCALE: 3/16" = 1'-0"

BARNABAS COURT
UNIT G - COLCHESTER, VT

REV.	
01/29/26	
02/04/26	

STERLING HOMES

1037 HINESBURG ROAD / SUITE A / S. BURLINGTON, VT 05403
SCALE: 3/16" = 1'-0" DATE: 01/26/26

6/8

